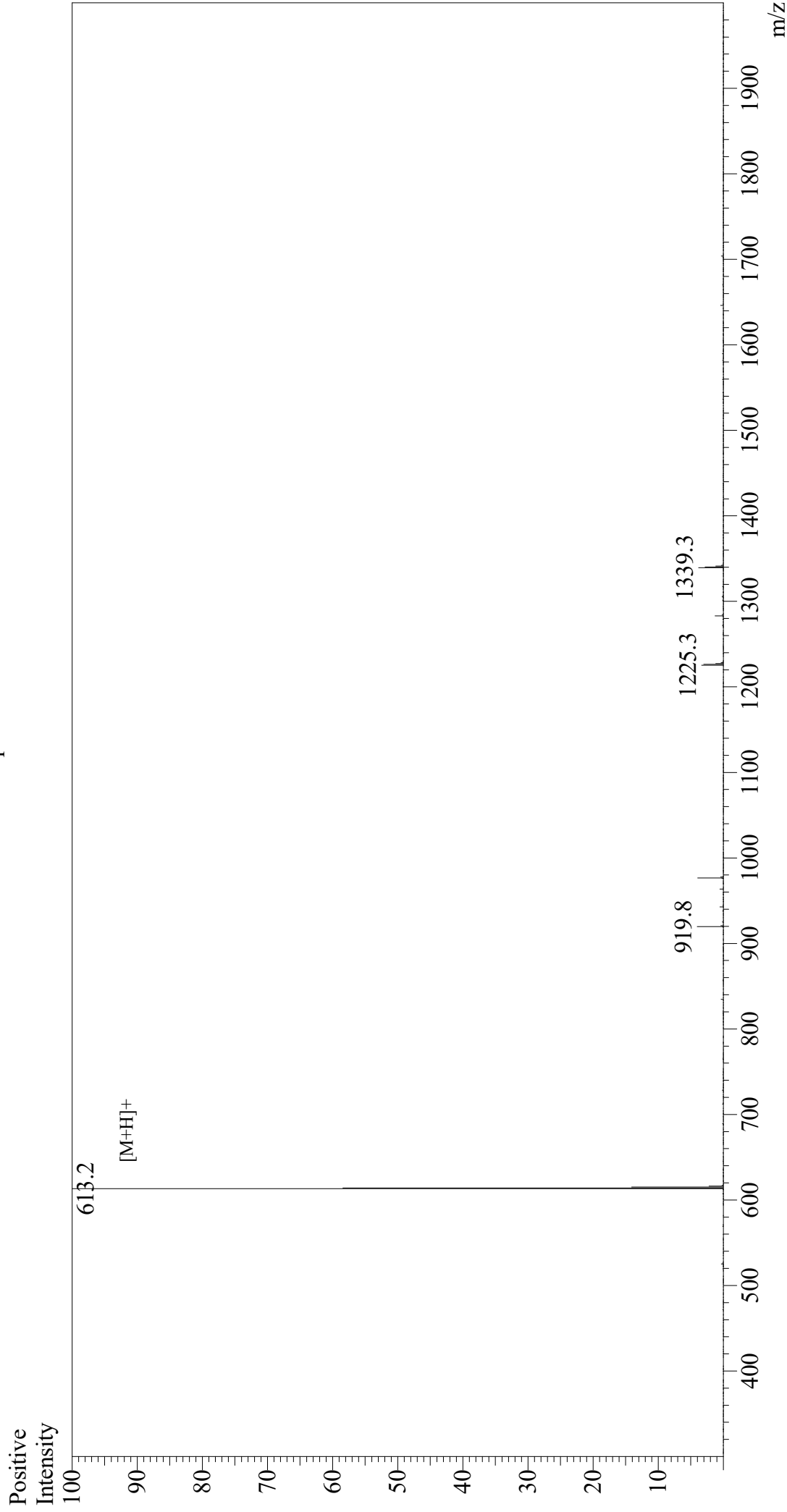


# Mass Spectrum



## Sample Information

Acquired by : Gary  
Month-Day Processed : 05/14/20  
Time Processed : 07:21:46 PM  
Injection Volume : 0.3  
Sample Name : N-Cbz-Phe-Arg-AMC  
Cat. No. : RP11385  
Lot. No. : E1308020E  
Theoretical MW : 612.60  
Observed MW : 612.2

Interface : ESI  
Nebulizing Gas Flow : 1.5L/min  
CDL Temp : 250  
Block Temp : 200

Equipment : GK11010007  
Interface Bias : +4.5 kV  
Drying Gas Flow : 5 L/min  
T.Flow : 0.2 ml/min  
B.conc : 50% H2O/50% MeOH