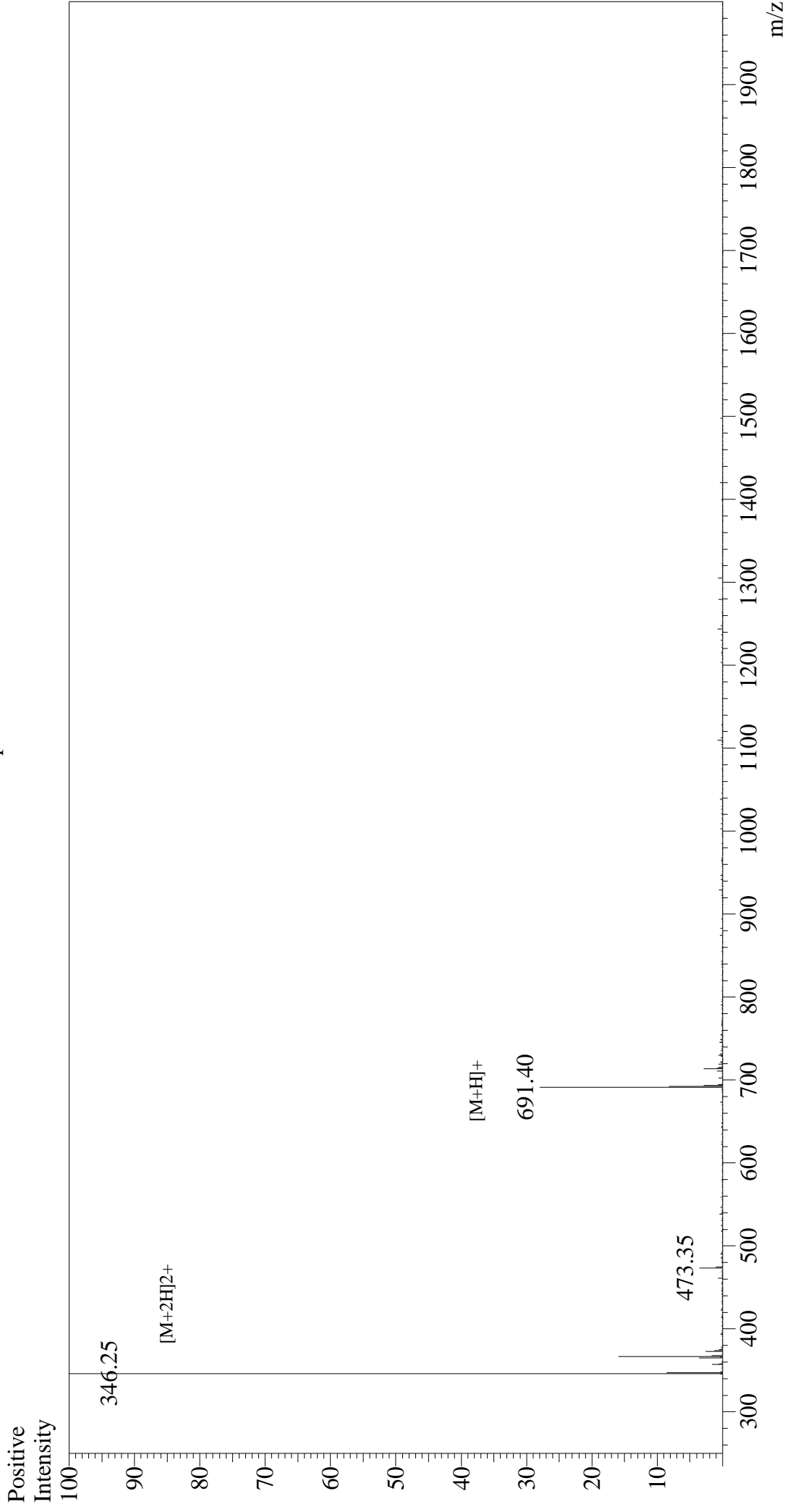


# Mass Spectrum



## Sample Information

Acquired by : Gary  
Month-Day Processed : 06/16/18  
Time Processed : 9:10:37  
Injection Volume : 0.2  
Sample Name : GRGDSPC  
Cat. No. : RP20283  
Lot. No. : PE2261806  
Theoretical MW : 689.73  
Observed MW : 690.50

Interface : ESI  
Nebulizing Gas Flow : 1.5L/min  
CDL Temp : 250°C  
Block Temp : 200°C

Interface Bias  
Drying Gas Flow  
T.Flow  
B.conc

: +4.5 kV  
: 5 L/min  
: 0.2 ml/min  
: 50% H2O/50% MeOH