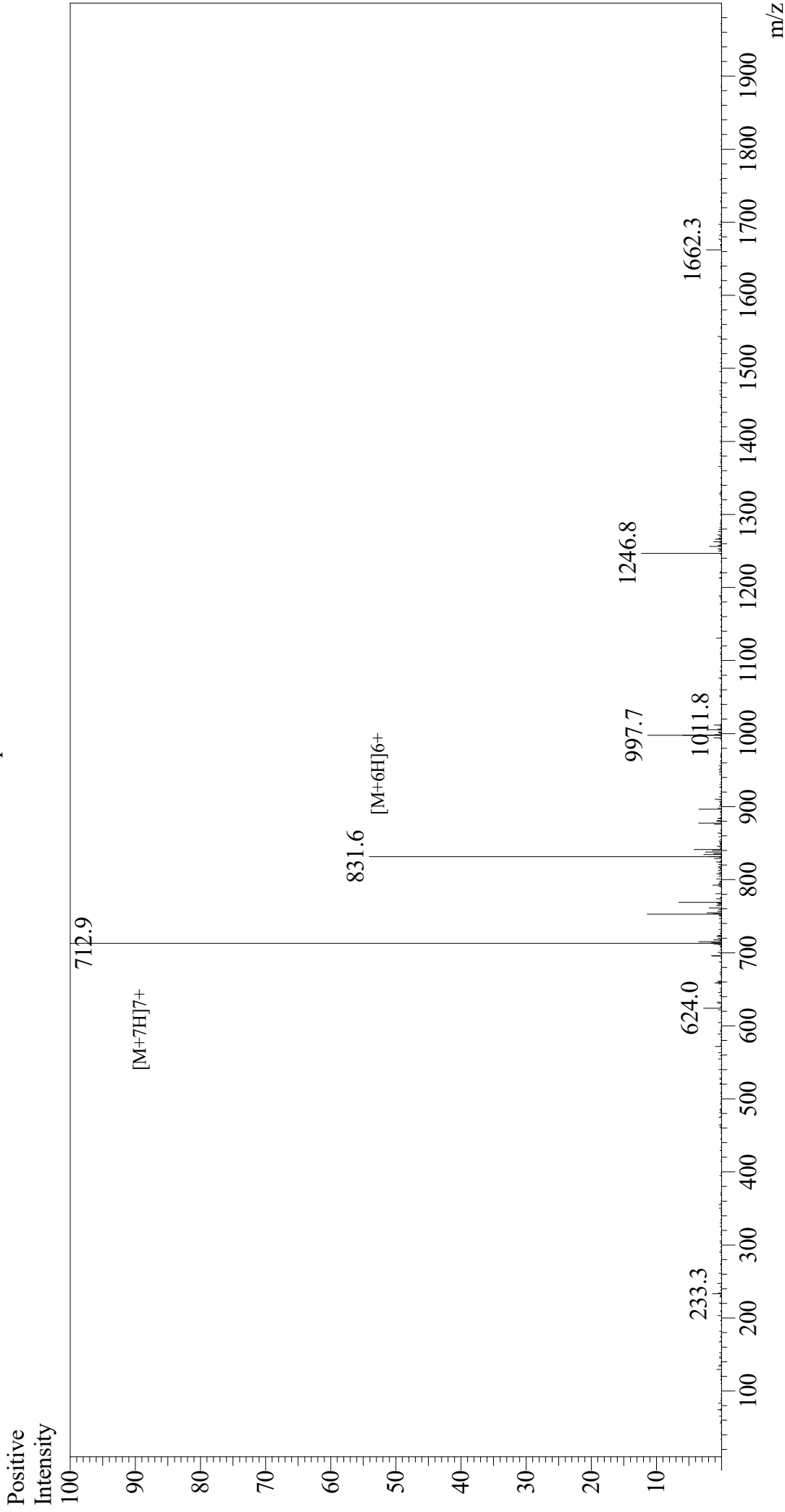


Mass Spectrum



Sample Information

Acquired by : Gary
Month-Day Processed : 06/17/19
Time Processed : 10:30:10 PM
Injection Volume : 0.3
Sample Name : Gastric Inhibitory Peptide (GIP), human
Cat. No. : RP10795
Lot. No. : E1187019F
Theoretical MW : 4983.60
Observed MW : 4983.3

Interface : ESI
Nebulizing Gas Flow : 1.5L/min
CDL Temp : 250
Block Temp : 200

Equipment : GK11010007
Interface Bias : +4.5 kV
Drying Gas Flow : 5 L/min
T.Flow : 0.2 ml/min
B.conc : 50%H2O/50%MeOH