

Sample Name :sgp91 ds-tat Peptide 2, scrambled

Cat. No. : RP20436

Lot. No. : E0334719F

Time Processed :14:47:53

Month-Day-Year Processed :06/14/2019

Pump A : 0.065% trifluoroacetic in 100% water (v/v)

Pump B : 0.05% trifluoroacetic in 100% acetonitrile (v/v)

Total Flow:1 ml/min

Wavelength:220 nm

Time	Unit	Command	Value	Comment
0.01	Pumps	Pump B Conc.	5	
25.00	Pumps	Pump B Conc.	65	
25.01	Pumps	Pump B Conc.	95	
27.00	Pumps	Pump B Conc.	95	
27.01	Pumps	Pump B Conc.	5	
35.00	Pumps	Pump B Conc.	5	
35.01	Controller	Stop		

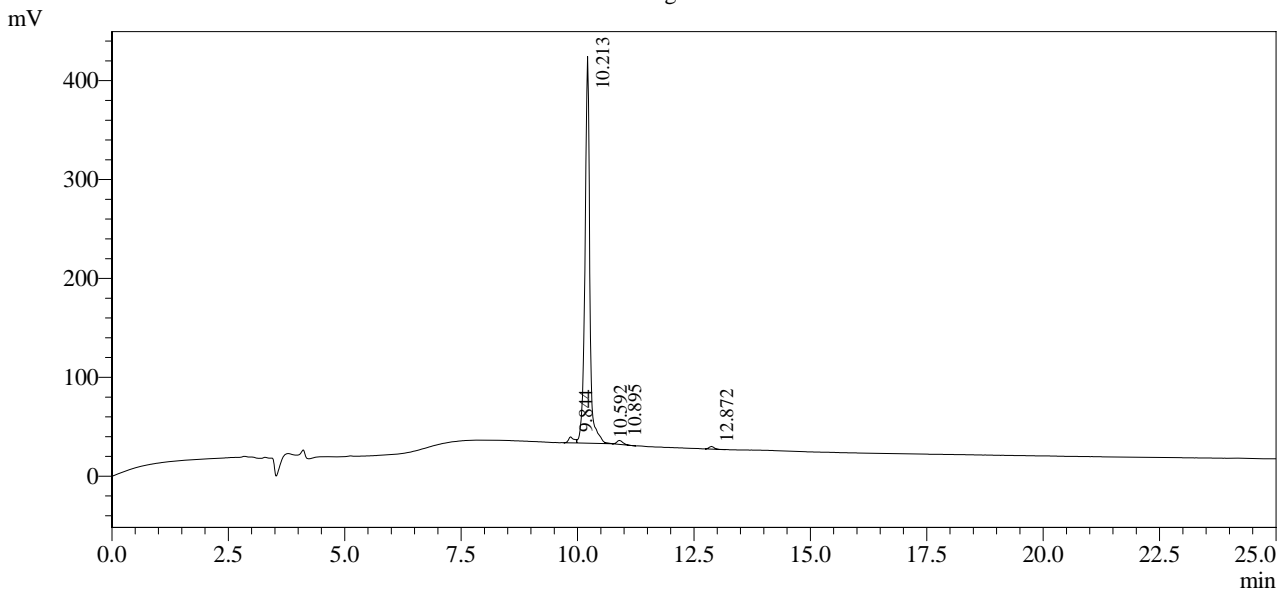
<<Column Performance>>

<Detector A>

Column : Inertsil ODS-3 4.6 x 250 mm

Equipment :SS-CM-0310

Chromatogram



1 Det.A Ch1 / 220nm

Peak Table

Detector A Ch1 220nm

Peak#	Ret. Time	Area	Height	Area %
1	9.844	51650	5986	1.768
2	10.213	2808199	391086	96.123
3	10.592	4944	1086	0.169
4	10.895	36252	3977	1.241
5	12.872	20412	2671	0.699
Total		2921457	404805	100.000