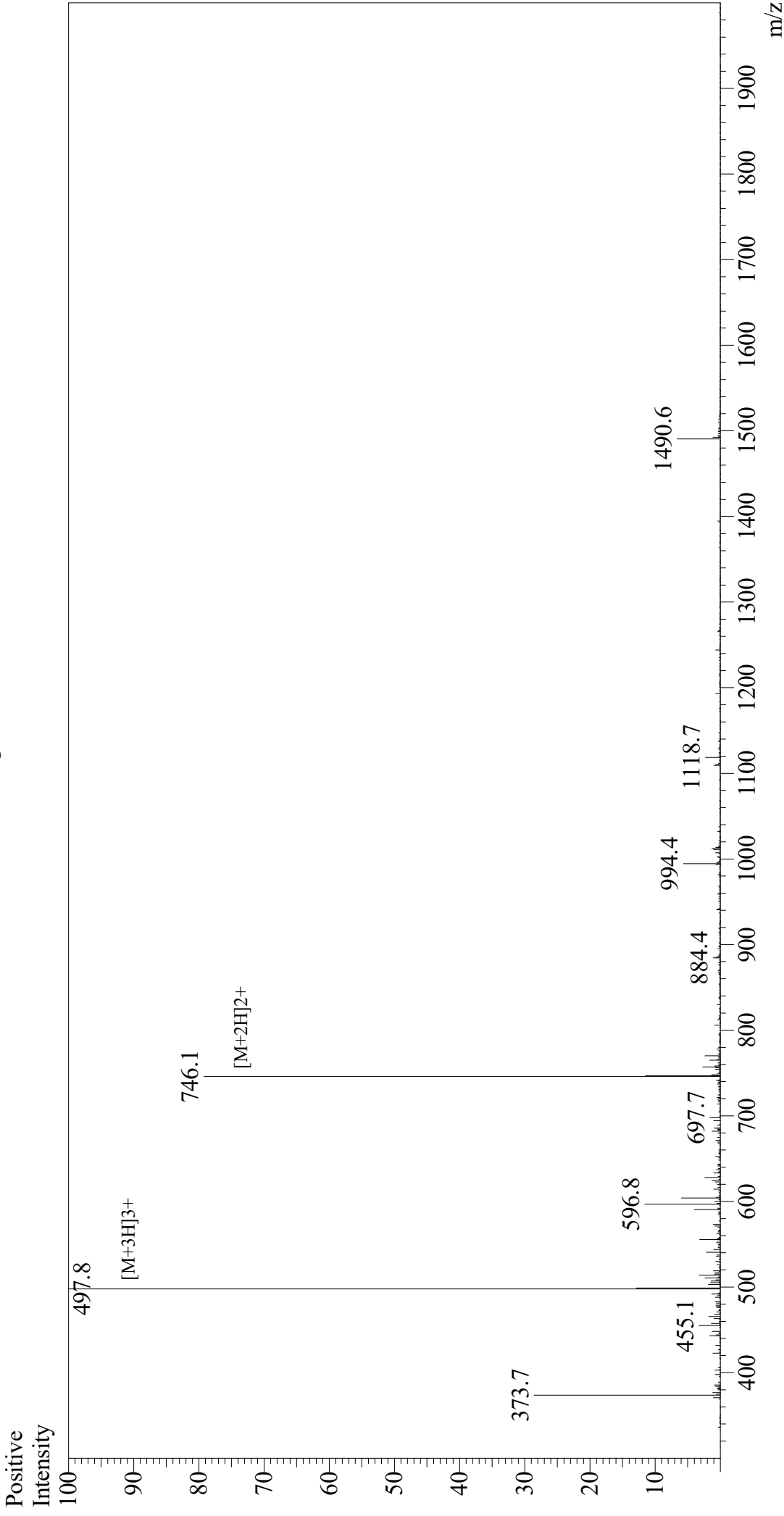


Mass Spectrum



Sample Information
Month-Day Processed : 11/02/20
Time Processed : 05:15:41 PM
Injection Volume : 0.6
Sample Name : SV40 T-Ag-derived NLS peptide
Cat No : RP20513
Lot No : E1073620J
Theoretical MW : 1490.80
Observed MW : 1490.4

Interface : ESI
Nebulizing Gas Flow : 1.5L/min
CDL Temp : 250
Block Temp : 200
Equipment : GK11010007
Interface Bias : +4.5 kV
Drying Gas Flow : 5 L/min
T.Flow : 0.2 ml/min
B.conc : 50%H₂O/50%MeOH