

Sample Name : Myomodulin  
 Cat.No : RP10606  
 Lot.No : E4291520L  
 Time Processed: 0:14:03  
 Year-Month-Day: 2020/12/27

Pump A : 0.065% trifluoroacetic in 100% water (v/v)  
 Pump B : 0.05% trifluoroacetic in 100% acetonitrile (v/v)  
 Total Flow: 1 ml/min

<<Detector A>>  
 Wavelength Ch1 : 220 nm

<<LC Time Program>>

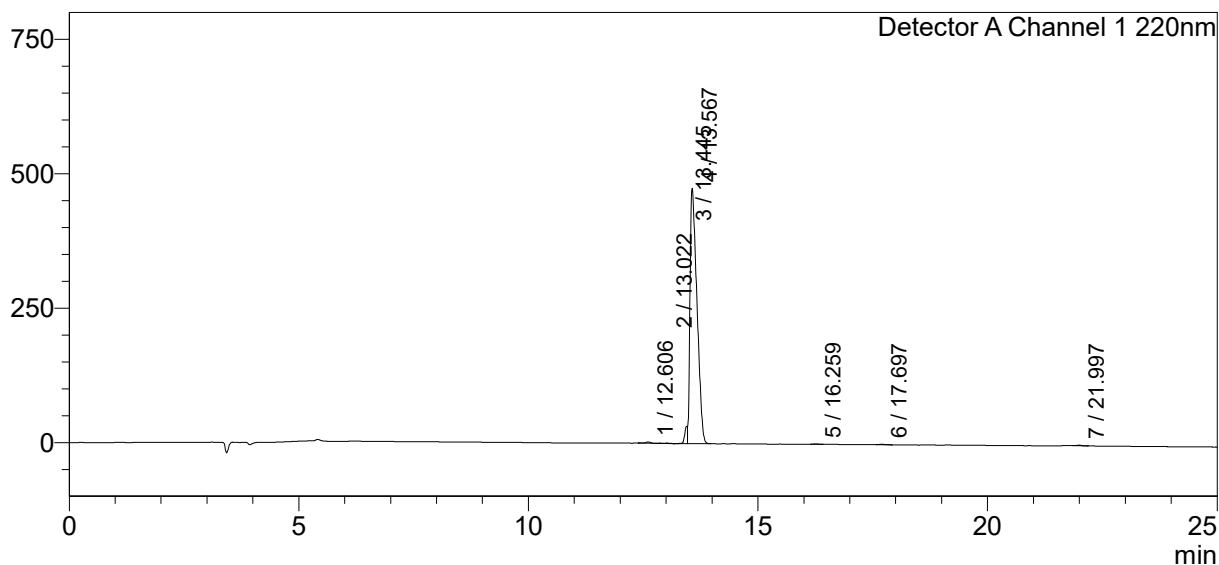
| Time  | Module     | Command         | Value | Comment |
|-------|------------|-----------------|-------|---------|
| 0.01  | Pumps      | Solvent B Conc. | 5     |         |
| 25.00 | Pumps      | Solvent B Conc. | 65    |         |
| 25.01 | Pumps      | Solvent B Conc. | 95    |         |
| 27.00 | Pumps      | Solvent B Conc. | 95    |         |
| 27.01 | Pumps      | Solvent B Conc. | 5     |         |
| 33.00 | Pumps      | Solvent B Conc. | 5     |         |
| 33.01 | Controller | Stop            |       |         |

<<Column Performance>>

<Detector A>  
 Column : Inertsil ODS-3 4.6 x 250 mm  
 Equipment: ZJ19010015

<Chromatogram>

mV



<Peak Table>

Detector A Channel 1 220nm

| Peak# | Ret. Time | Area    | Height | Area%   |
|-------|-----------|---------|--------|---------|
| 1     | 12.606    | 14974   | 2265   | 0.290   |
| 2     | 13.022    | 3736    | 683    | 0.072   |
| 3     | 13.445    | 136675  | 32212  | 2.648   |
| 4     | 13.567    | 4984075 | 475040 | 96.572  |
| 5     | 16.259    | 5495    | 928    | 0.106   |
| 6     | 17.697    | 7749    | 1110   | 0.150   |
| 7     | 21.997    | 8270    | 1348   | 0.160   |
| Total |           | 5160974 | 513586 | 100.000 |