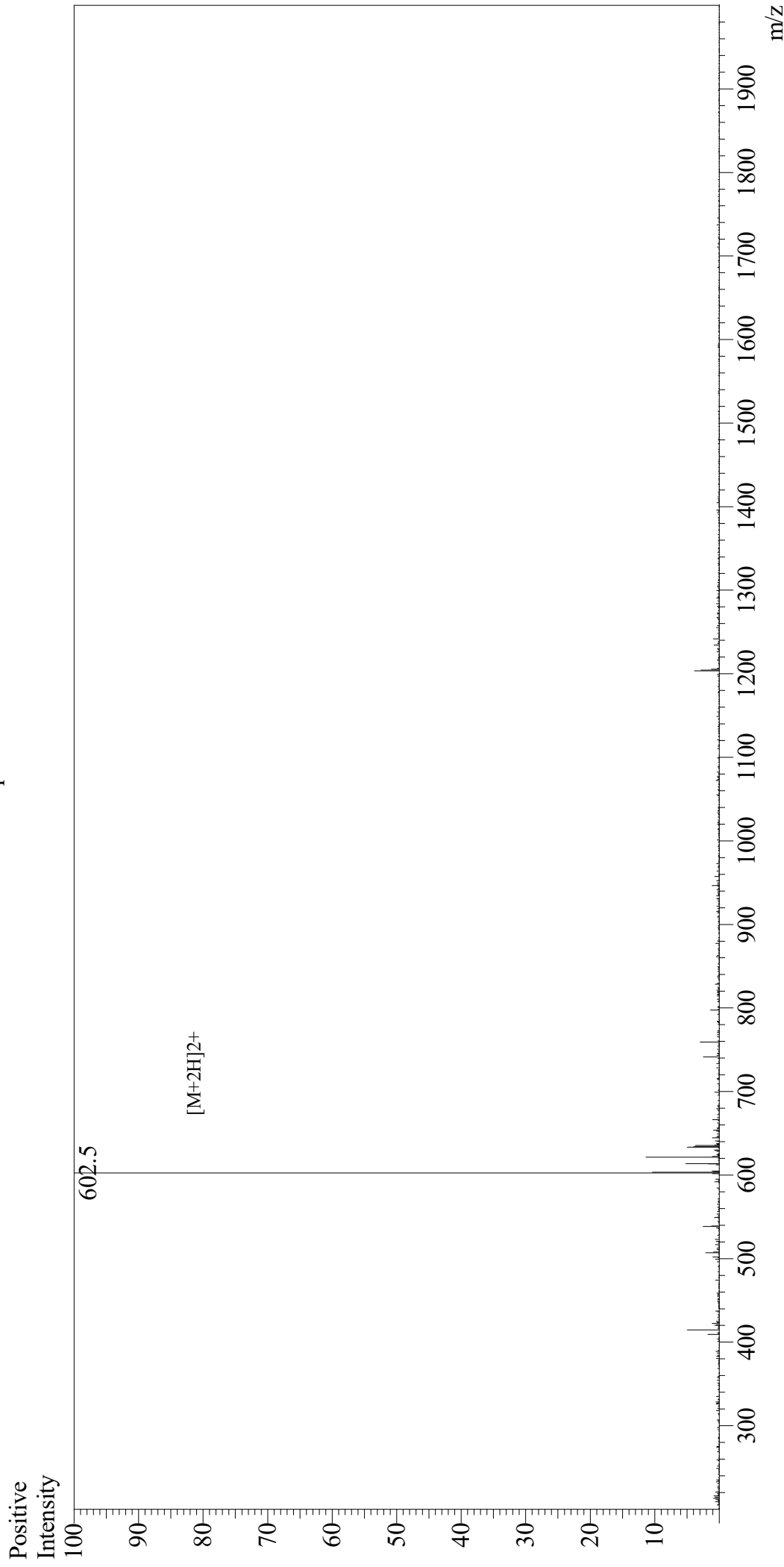


Mass Spectrum



| | | |
|-----------------------|---------------------|-------------------------------|
| Sample Information | Equipment | : GK11010007 |
| Month-Day Processed : | Interface Bias | : +4.5kV |
| Time Processed : | Drying Gas Flow | : 5 L/min |
| Injection Volume : | T.Flow | : 0.2ml/min |
| Sample Name : | B.conc | : 50%H ₂ O/50%MeOH |
| Cat No. : | Interface | : ESI |
| Lot No. : | Nebulizing Gas Flow | : 1.5L/min |
| Theoretical MW : | CDL Temp | : 250 |
| Observed MW : | Block Temp | : 200 |