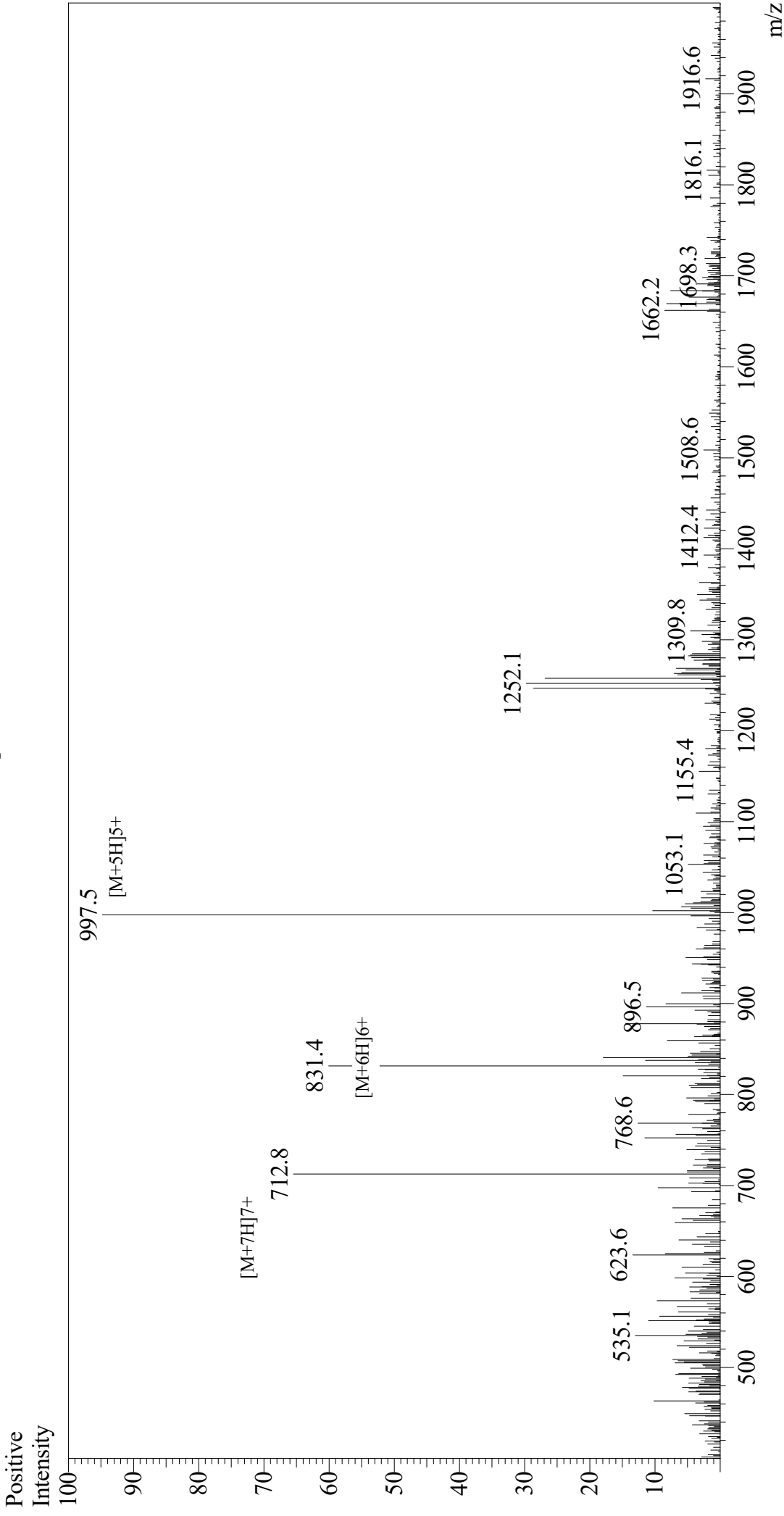


# Mass Spectrum



Sample Information  
 Month-Day Processed : 11/25/20  
 Time Processed : 11:17:05 PM  
 Injection Volume : 0.4  
 Sample Name : Gastric Inhibitory Peptide (GIP), human  
 Cat No : RP10795  
 Lot NO : E5624120K  
 Theoretical MW : 4983.60  
 Observed MW : 4982.5

Interface : ESI  
 Nebulizing Gas Flow : 1.5L/min  
 CDL Temp : 250  
 Block Temp : 200

Equipment : GK11010007  
 Interface Bias : +4.5 kV  
 Drying Gas Flow : 5 L/min  
 T.Flow : 0.2 ml/min  
 B.conc : 50%H2O/50%MeOH