

Sample Name :Endomorphin-1
 Cat. No. :RP10925
 Lot. No. :PE1861811
 Time Processed :9:26:44
 Month-Day-Year Processed :11/30/2018

Pump A : 0.065% trifluoroacetic in 100% water (v/v)
 Pump B : 0.05% trifluoroacetic in 100% acetonitrile (v/v)
 Total Flow:1 ml/min
 Wavelength:220 nm

| Time | Unit | Command | Value | Comment |
|-------|------------|--------------|-------|---------|
| 0.01 | Pumps | Pump B Conc. | 5 | |
| 25.00 | Pumps | Pump B Conc. | 65 | |
| 25.01 | Pumps | Pump B Conc. | 95 | |
| 27.00 | Pumps | Pump B Conc. | 95 | |
| 27.01 | Pumps | Pump B Conc. | 5 | |
| 35.00 | Pumps | Pump B Conc. | 5 | |
| 35.01 | Controller | Stop | | |

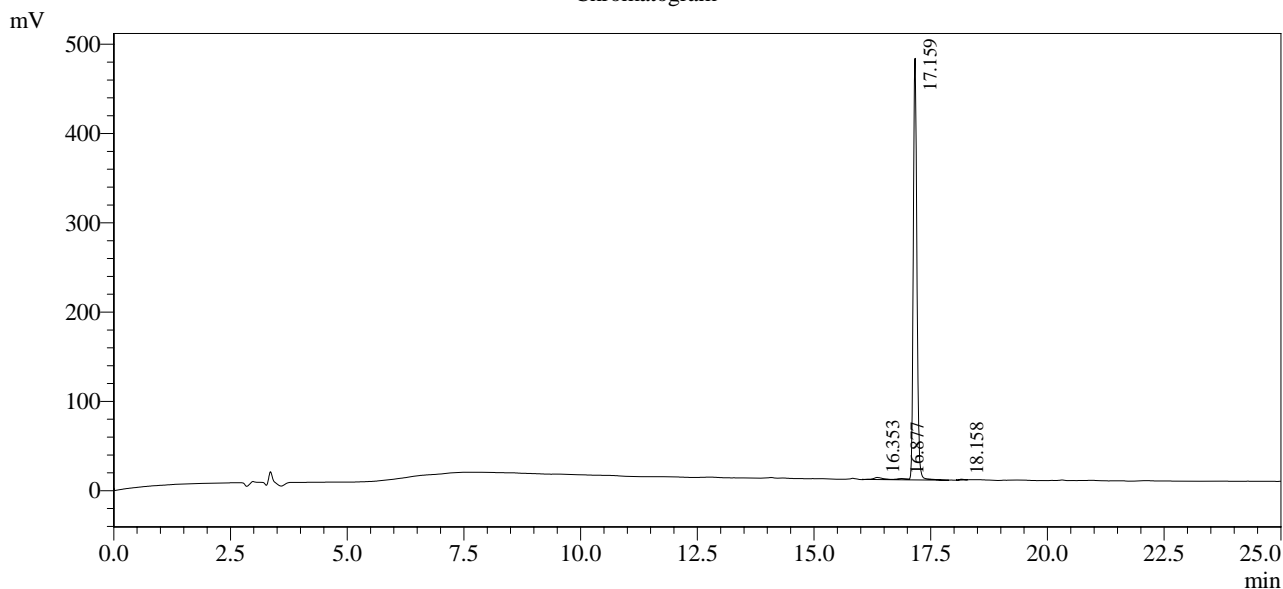
<<Column Performance>>

<Detector A>

Column : Inertsil ODS-3 4.6 x 250 mm

Equipment :SS-CM-0310

Chromatogram



1 Det.A Ch1 / 220nm

Peak Table

Detector A Ch1 220nm

| Peak# | Ret. Time | Area | Height | Area % |
|-------|-----------|---------|--------|---------|
| 1 | 16.353 | 33957 | 2312 | 1.301 |
| 2 | 16.877 | 20348 | 1356 | 0.780 |
| 3 | 17.159 | 2549772 | 472267 | 97.722 |
| 4 | 18.158 | 5145 | 862 | 0.197 |
| Total | | 2609221 | 476798 | 100.000 |