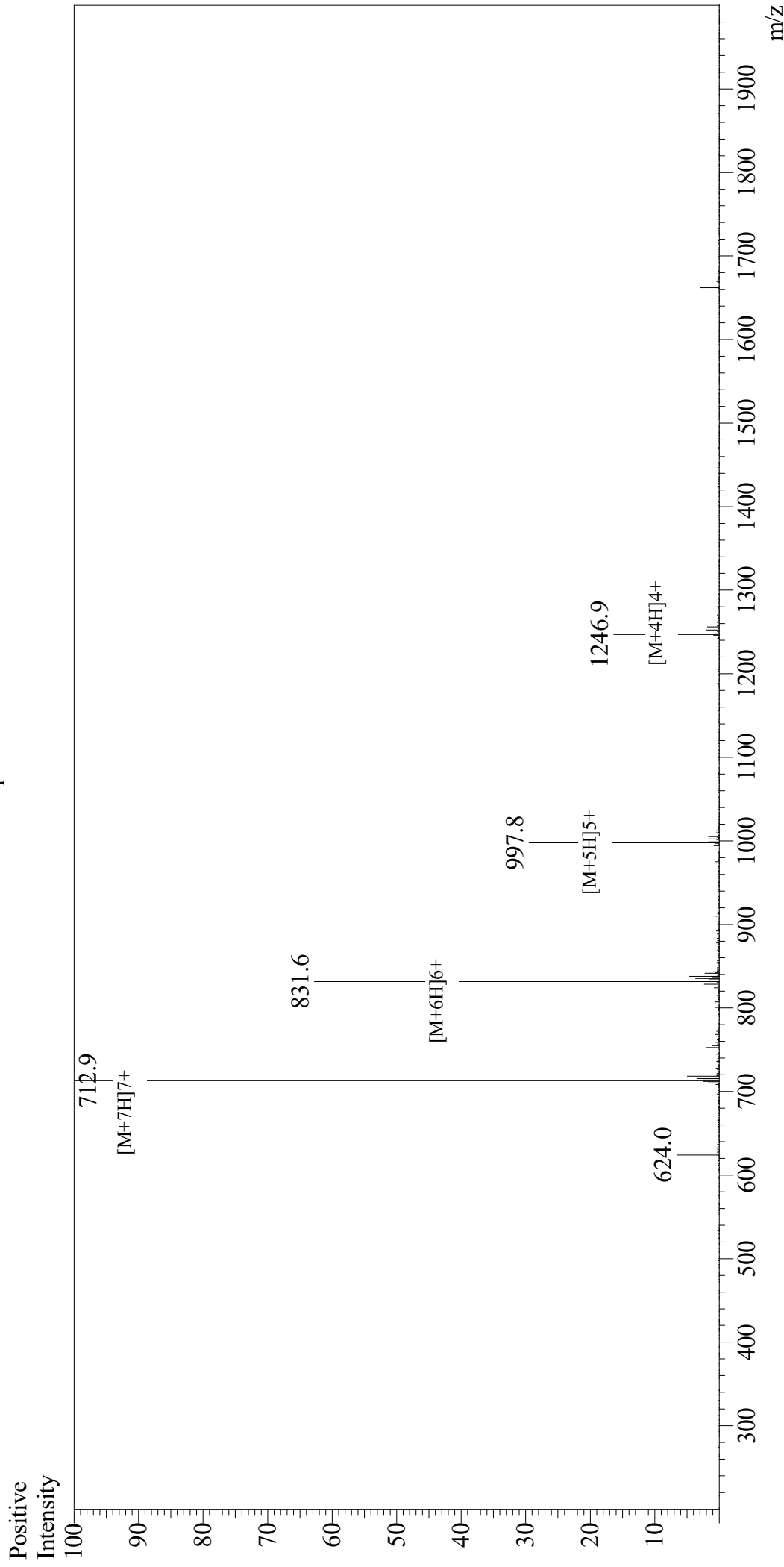


Mass Spectrum



Sample Information

User : Gary
 Month-Day Processed : 06/01/19
 Time Processed : 10:27:07 AM
 Injection Volume : 0.3
 Sample Name : Gastric Inhibitory Peptide (GIP), human
 Cat No. : RP10795
 Lot No. : PE2011905
 Theoretical MW : 4983.60
 Observed MW : 4983.3

Interface : ESI
 Nebulizing Gas Flow : 1.5L/min
 CDL Temp : 250
 Block Temp : 200

Equipment : GK11010007
 Interface Bias : +4.5kV
 Drying Gas Flow : 5 L/min
 T.Flow : 0.2ml/min
 B.conc : 50% H_2O /50% MeOH