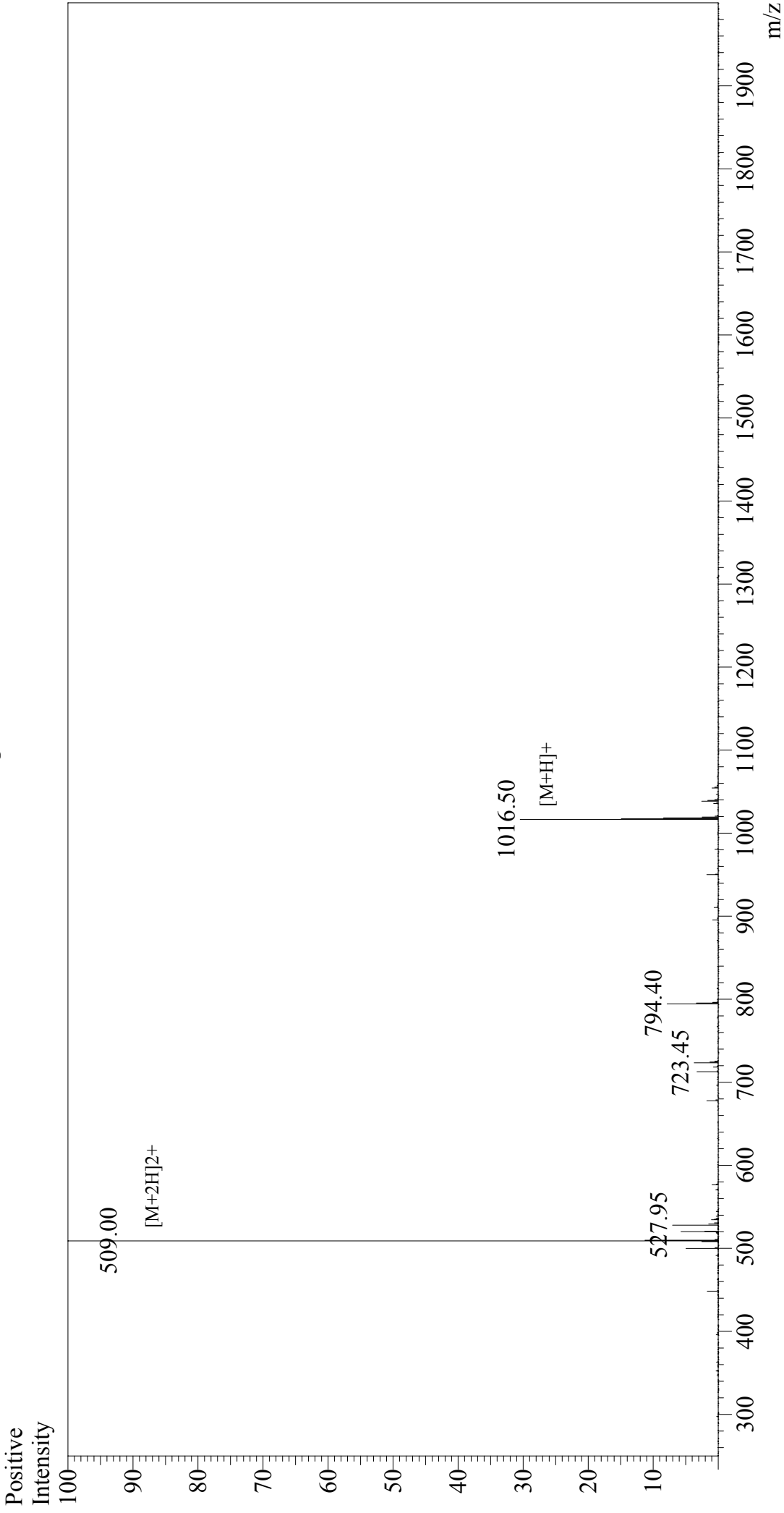


Mass Spectrum



Sample Information

Acquired by : Gary
Month-Day Processed : 10/20/17
Time Processed : 11:44:27
Injection Volume : 0.2
Sample Name : GP (33-41)
Cat. No. : RP20091
Lot. No. : PE7191710
Theoretical MW : 1016.18
Observed MW : 1016.00

Interface : ESI
Nebulizing Gas Flow : 1.5L/min
CDL Temp : 250°C
Block Temp : 200°C

Interface Bias
Drying Gas Flow : 5 L/min
T.Flow : 0.2 ml/min
B.conc : 50%H2O/50%MeOH

: +4.5 kV