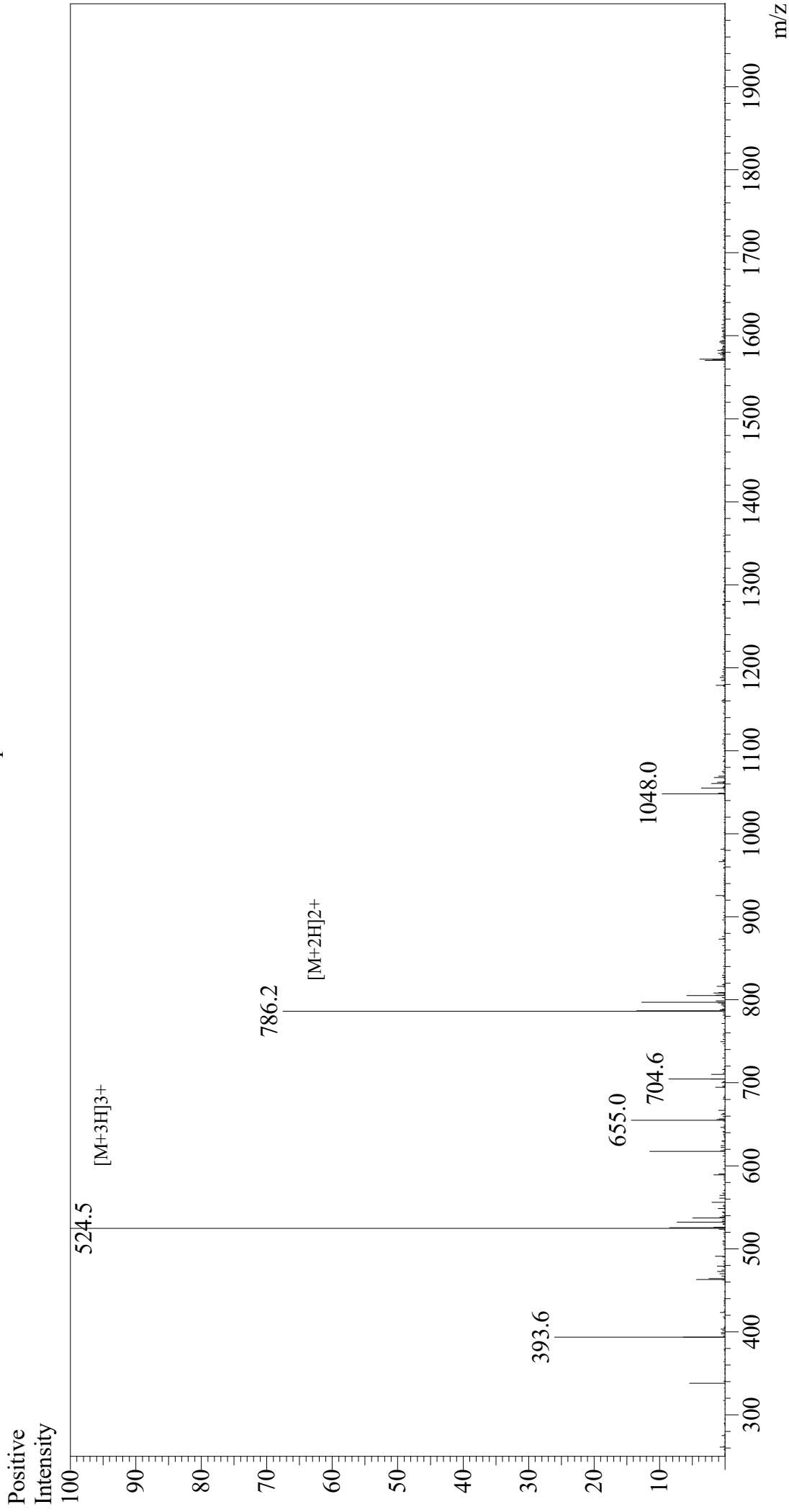


# Mass Spectrum



Sample Information  
Month-Day Processed : 11/04/20  
Time Processed : 08:39:33 AM  
Injection Volume : 0.3  
Sample Name : V-2 - MSH (41 - 58), amide  
Cat No. : RP20307  
Lot No. : E9801020J  
Theoretical MW : 1570.78  
Observed MW : 1570.5

Interface : ESI  
Nebulizing Gas Flow : 1.5L/min  
CDL Temp : 250  
Block Temp : 200

Equipment : GK11010007  
Interface Bias : +3.5 kV  
Drying Gas Flow : 5 L/min  
T.Flow : 0.2 ml/min  
B.conc : 50%H2O/50%MeOH