

Sample Name : Endothelin 1, human, porcine
 Cat. No. :RP12758
 Lot. No. :PE1571801

Pump A : 0.065% trifluoroacetic in 100% water (v/v)
 Pump B : 0.05% trifluoroacetic in 100% acetonitrile (v/v)
 Total Flow:1 ml/min
 Wavelength:220 nm

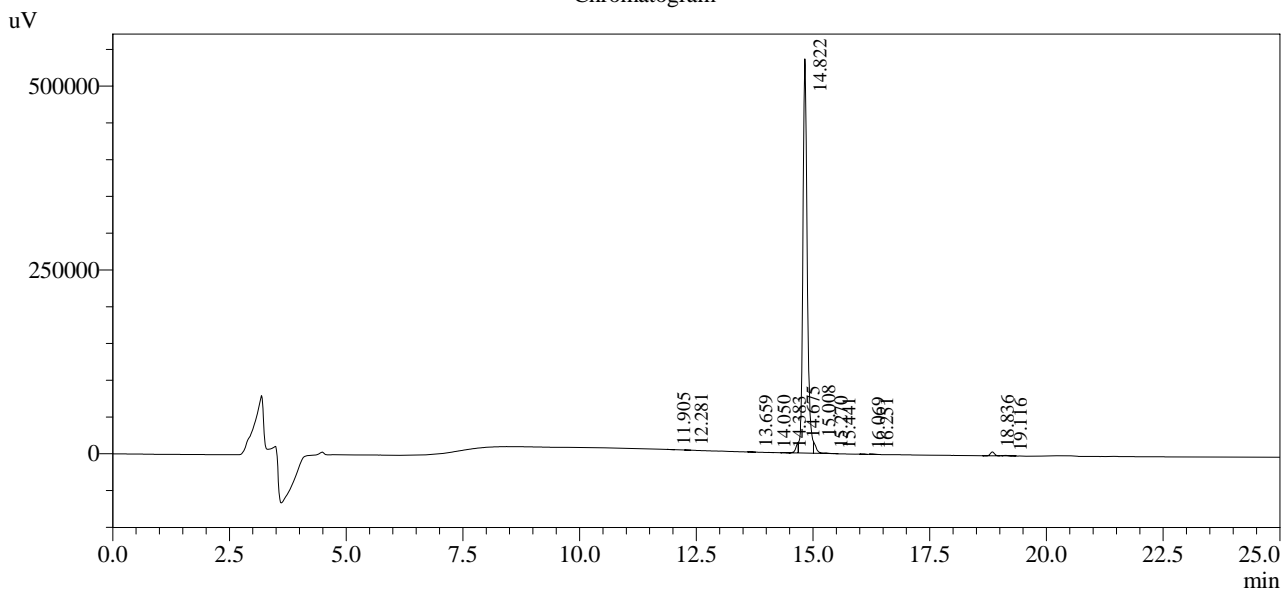
| Time | Unit | Command | Value | Comment |
|-------|------------|---------------|-------|---------|
| 0.01 | Pumps | Pump A B.Conc | 5 | |
| 25.00 | Pumps | Pump A B.Conc | 65 | |
| 25.01 | Pumps | Pump A B.Conc | 95 | |
| 27.00 | Pumps | Pump A B.Conc | 95 | |
| 27.01 | Pumps | Pump A B.Conc | 5 | |
| 35.00 | Pumps | Pump A B.Conc | 5 | |
| 35.01 | Controller | Stop | | |

<<Column Performance>>

<Detector A>

Column : Alltima™ C18 4.6 x 250 mm

Chromatogram



1 Det.A Ch1 / 220nm

Peak Table

Detector A Ch1 220nm

| Peak# | Ret. Time | Area | Height | Area % |
|-------|-----------|---------|--------|---------|
| 1 | 11.905 | 445 | 109 | 0.012 |
| 2 | 12.281 | 525 | 109 | 0.015 |
| 3 | 13.659 | 1185 | 259 | 0.033 |
| 4 | 14.050 | 95 | 2 | 0.003 |
| 5 | 14.383 | 1051 | 179 | 0.029 |
| 6 | 14.675 | 51149 | 13906 | 1.415 |
| 7 | 14.822 | 3457459 | 536221 | 95.666 |
| 8 | 15.008 | 58195 | 15937 | 1.610 |
| 9 | 15.270 | 3801 | 642 | 0.105 |
| 10 | 15.441 | 261 | 51 | 0.007 |
| 11 | 16.069 | 1774 | 389 | 0.049 |
| 12 | 16.251 | 1699 | 140 | 0.047 |
| 13 | 18.836 | 32037 | 5265 | 0.886 |
| 14 | 19.116 | 4415 | 555 | 0.122 |
| Total | | 3614092 | 573763 | 100.000 |