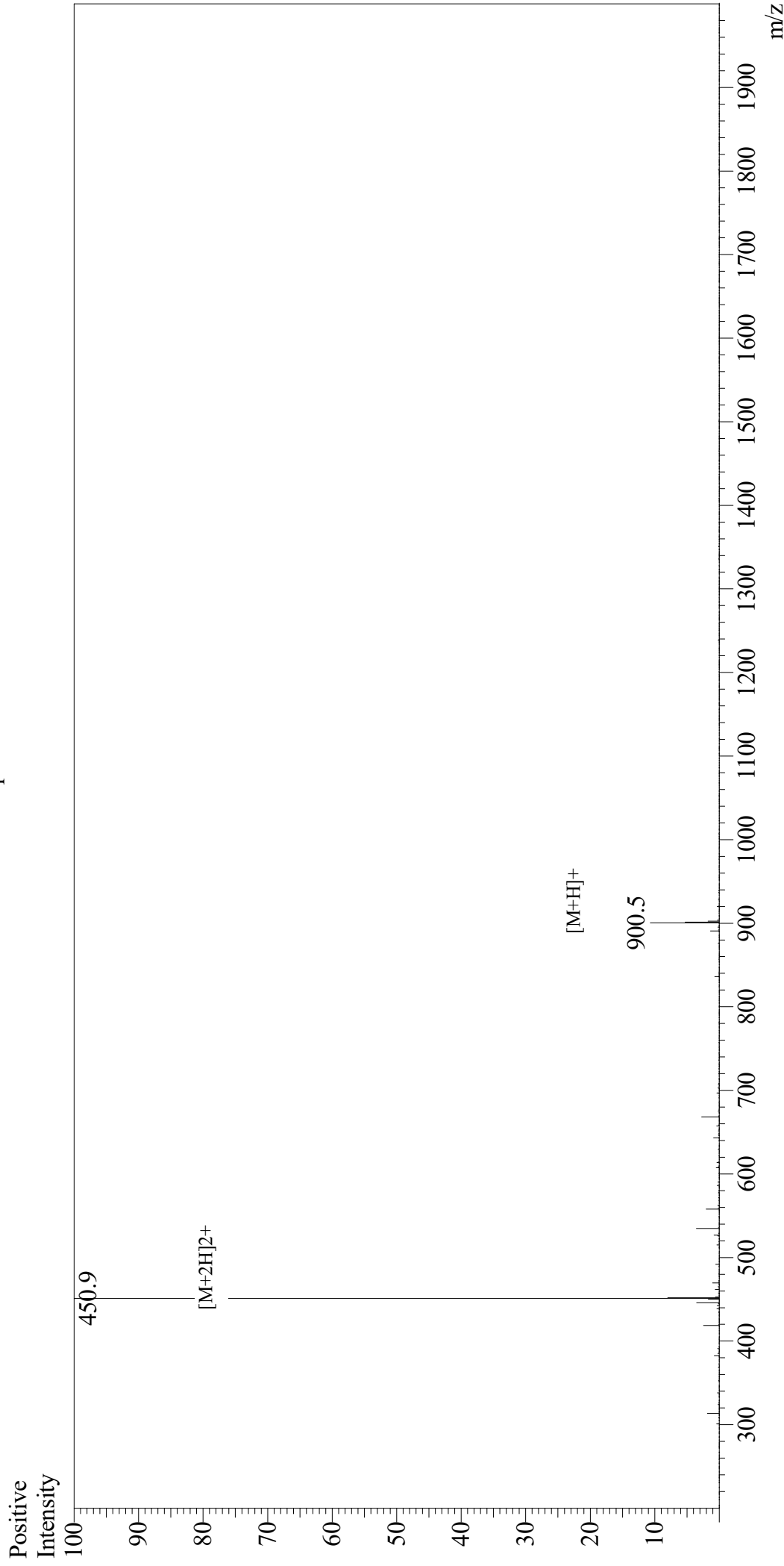


# Mass Spectrum



## Sample Information

User : Gary  
Month-Day Processed : 10/05/19  
Time Processed : 10:32:36 AM  
Injection Volume : 0.3  
Sample Name : Substance P (1-7)  
Cat No. : RP10180  
Lot No. : E6977619J  
Theoretical MW : 900.04  
Observed MW : 899.8

Interface : ESI  
Nebulizing Gas Flow : 1.5L/min  
CDL Temp : 250  
Block Temp : 200  
Equipment : GK11010007  
Interface Bias : +4.5kV  
Drying Gas Flow : 5 L/min  
T.Flow : 0.2ml/min  
B.conc : 50%H2O/50%MeOH