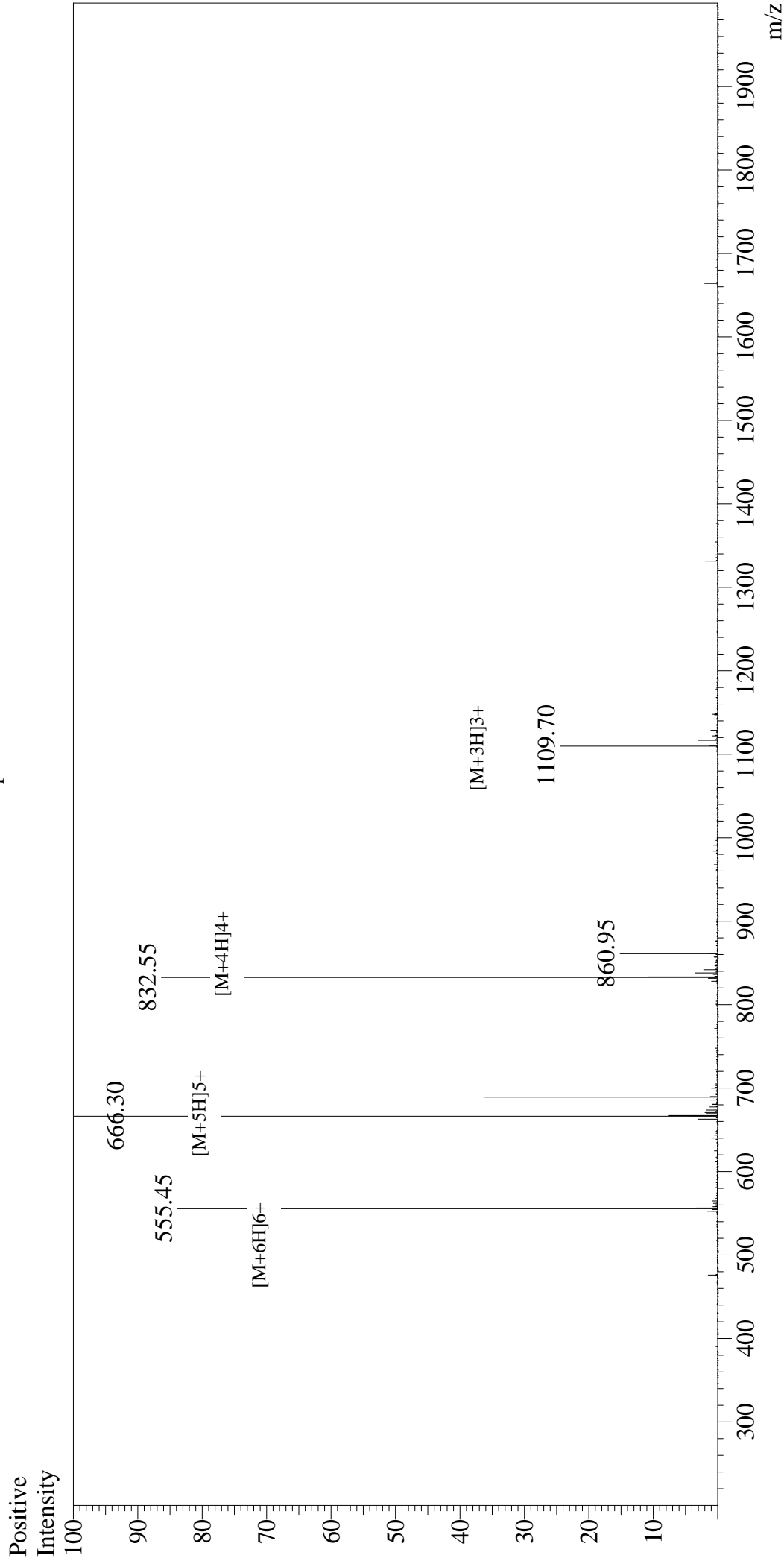


# Mass Spectrum



## Sample Information

User : Gary  
 Month-Day Processed : 06/21/18  
 Time Processed : 20:11:51  
 Injection Volume : 0.2  
 Sample Name : VIP, human, ovine, porcine, rat  
 Cat No. : RP10085  
 Lot No. : PE9991806  
 Theoretical MW : 3325.80  
 Observed MW : 3326.50

Interface : ESI  
 Nebulizing Gas Flow : 1.5L/min  
 CDL Temp : 250°C  
 Block Temp : 200°C

Interface Bias : +4.5kV  
 Drying Gas Flow : 5 L/min  
 T.Flow : 0.2ml/min  
 B.conc : 50%H2O/50%MeOH