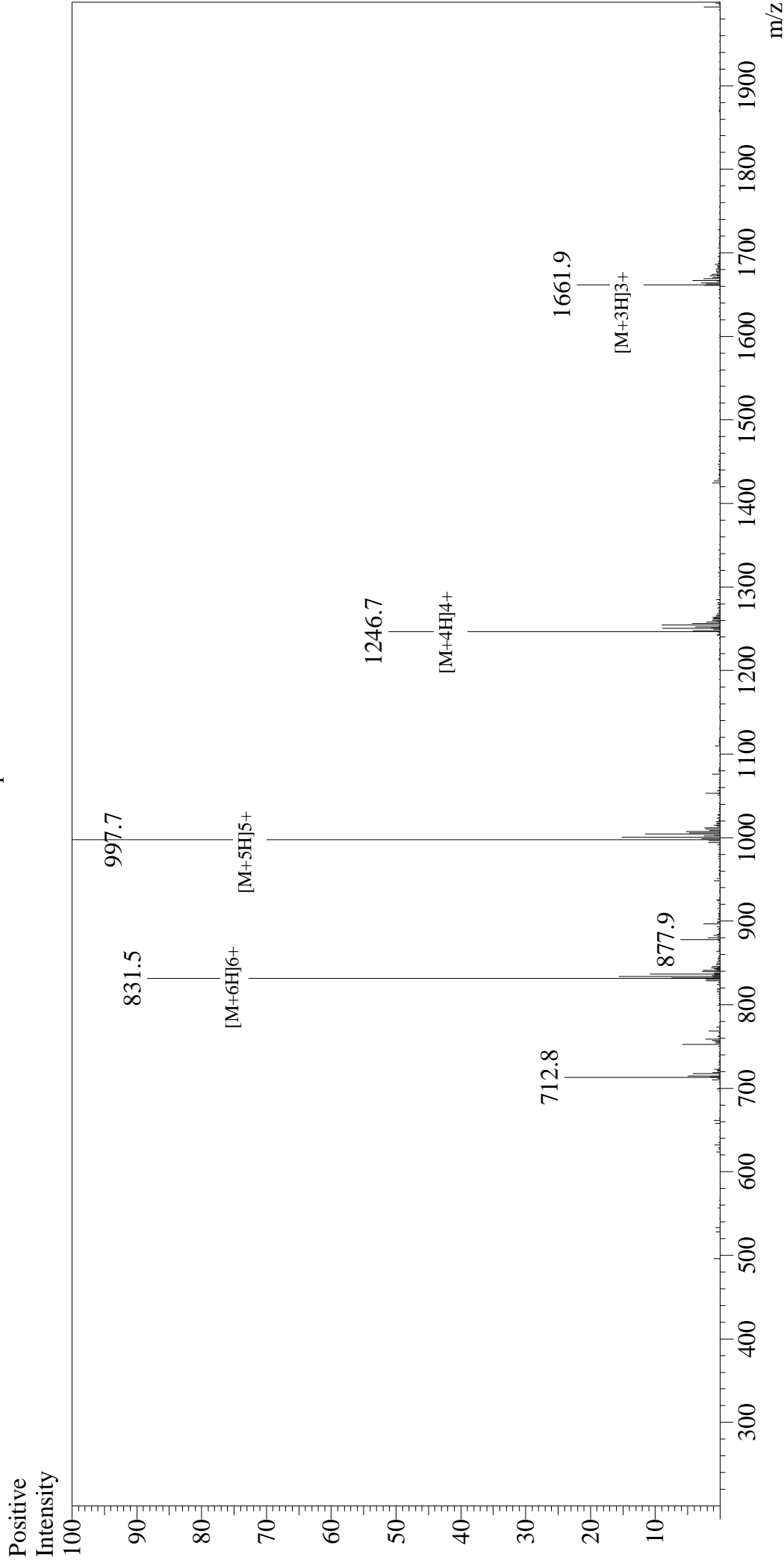


Mass Spectrum



Sample Information

User : Gary
 Month-Day Processed : 11/01/18
 Time Processed : 16:42:27
 Injection Volume : 0.2
 Sample Name : Gastric Inhibitory Peptide (GIP), human
 Cat No. : RPI0795
 Lot No. : PE2561811
 Theoretical MW : 4983.60
 Observed MW : 4983.5

Interface : ESI
 Nebulizing Gas Flow : 1.5L/min
 CDL Temp : 250°C
 Block Temp : 200°C

Equipment : GK11010007
 Interface Bias : +4.5kV
 Drying Gas Flow : 5 L/min
 T.Flow : 0.2ml/min
 B.conc : 50%H2O/50%MeOH