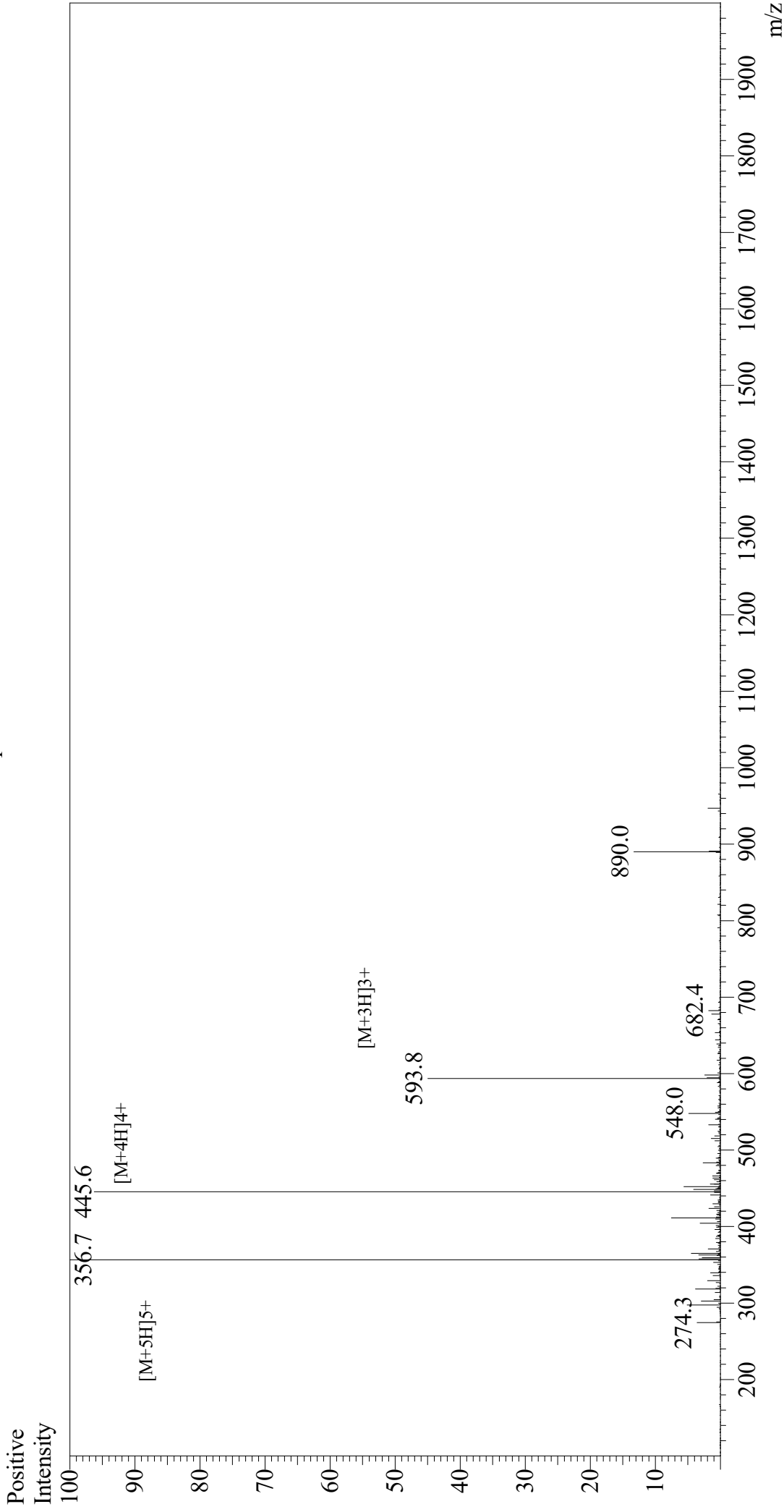


Mass Spectrum



Sample Information

Acquired by: Gary
 Month-Day Processed: 06/14/19
 Time Processed: 07:26:59 AM
 Injection Volume: 0.3
 Sample Name: SAMS Peptide
 Cat. No.: RP20457
 Lot. No.: E0334219F
 Theoretical MW: 1778.20
 Observed MW: 1778.5

Interface: ESI
 Nebulizing Gas Flow: 1.5L/min
 CDL Temp: 250
 Block Temp: 200

Equipment: GK11010007
 Interface Bias: +4.5 kV
 Drying Gas Flow: 5 L/min
 T.Flow: 0.2 ml/min
 B.conc: 50% H2O/50% MeOH