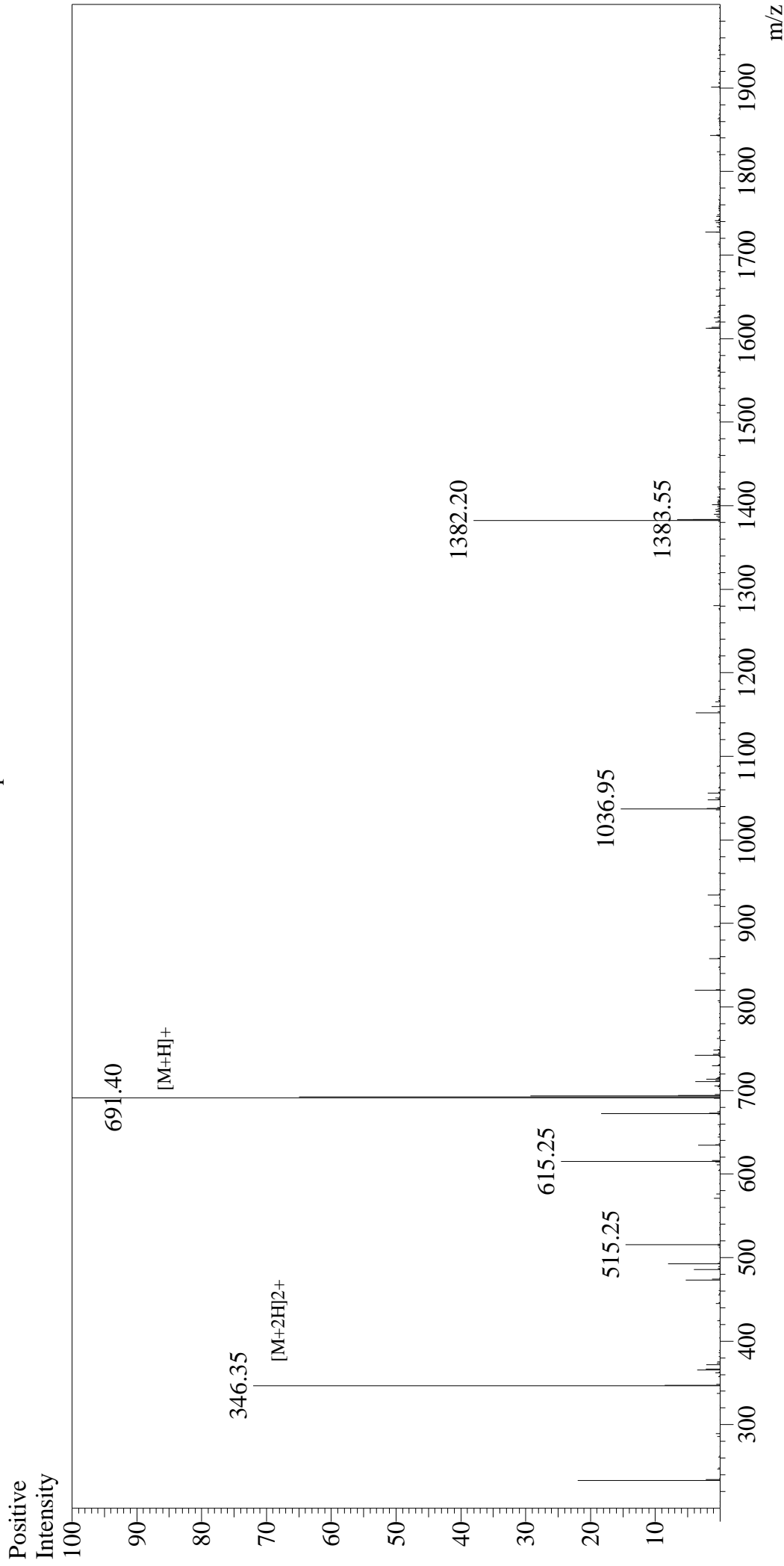


Mass Spectrum



Sample Information

User : Gary
Month-Day Processed : 07/20/17
Time Processed : 15:37:44
Injection Volume : 0.2
Sample Name : GRGDSPC
Cat No. : RP20283
Lot No. : PE9911707
Theoretical MW : 690.73
Observed MW : 690.40

Interface

Interface : ESI
Nebulizing Gas Flow : 1.5L/min
CDL Temp : 250°C
Block Temp : 200°C

Interface Bias

Interface Bias : +4.5kV
Drying Gas Flow : 5 L/min
T.Flow : 0.2ml/min
B.conc : 50%H2O/50%MeOH