

CD36 antibody (FL95), mAb, Mouse

Cat. No.	Name	Size
V07901	CD36 antibody (FL95), mAb, Mouse	*

Note: * Available in multiple package sizes: 100 µg, 1 mg (or more). GenScript can customize each product per customer's request including product size, buffer components, etc. GenScript can also provide conjugated antibody per customer's request with Biotin, FITC, PE and APC.

Specificity	Human CD36
Alternative Name	BDPLT10, GP4, GPIV, PASIV, FAT and GP3B,
Isotype	IgG2a, κ
Clone	FL95
Application	Flow cytometry
Recommended Usage	It is recommended that the reagent be titrated for optimal performance for each application. Each lot of the antibodies undergoes quality control test by flow cytometric analysis.
Preparation	Protein A/G affinity column
Concentration	Lot-specific. Please check your CoA to find the concentration.
Formulation	1) PBS, pH 7.4, containing 0.03% Proclin 300 2) 50 mM Na-citrate, 150 mM NaCl, pH7.0, containing 0.03% Proclin 300 * *: For new batch since 09/01/2018, please refer to COA.
Storage	The antibody should be stored for up to three months at 2-8°C or for up to three years at -20°C or below. Avoid repeated freezing and thawing cycles.
Background	CD36 is a glycoprotein, which belongs to the class B scavenger receptor family. It is expressed on monocytes, macrophages, dendritic cells, erythroid precursors, platelets, and adipocytes. CD36 binds many ligands

including collagen, thrombospondin, long chain fatty acids, oxidized LDL, as well as apoptotic cells. It may be participate in glucose intolerance, atherosclerosis, Alzheimer's disease and cardiomyopathy.

Fluorescent Dyes	Excitation Source	Excitation Max	Emission Max
FITC	Blue 488 nm	494 nm	520 nm
PE	Blue 488 nm, Green 532 nm, Yellow/Green 561 nm	496 nm	578 nm
APC	Red 633 nm	650 nm	660 nm

Data Demonstration

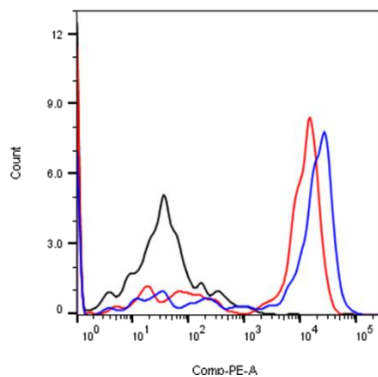


Figure 1. Peripheral blood monocytes were stained with CD36 antibody (FL95), mAb, Mouse (GenScript, V07901; red curve) or with a negative control antibody (black curve), or with a positive antibody (blue curve) followed by R-PE conjugated anti-mouse IgG in flow cytometric analysis.

For research use only