

CD138 antibody (FL12), mAb, Mouse

Cat. No.	Name	Size
V07801	CD138 antibody (FL12), mAb, Mouse	*

Note: * Available in multiple package sizes: 100 µg, 1 mg (or more). GenScript can customize each product per customer's request including product size, buffer components, etc. GenScript can also provide conjugated antibody per customer's request with Biotin, FITC, PE and APC.

Specificity	Human CD138
Alternative Name	SDC1, SDC, Synd1 and syndecan-1
Isotype	IgG1, κ
Clone	FL12
Application	Flow cytometry
Recommended Usage	It is recommended that the reagent be titrated for optimal performance for each application. Each lot of the antibodies undergoes quality control test by flow cytometric analysis.
Preparation	Protein A/G affinity column
Concentration	Lot-specific. Please check your CoA to find the concentration.
Formulation	1) PBS, pH 7.4, containing 0.03% Proclin 300 2) 50 mM Na-citrate, 150 mM NaCl, pH7.0, containing 0.03% Proclin 300 * *: For new batch since 09/01/2018, please refer to COA.
Storage	The antibody should be stored for up to three months at 2-8°C or for up to three years at -20°C or below. Avoid repeated freezing and thawing cycles.
Background	CD138 is a transmembrane protein, which belongs to the syndecan proteoglycan family. It is expressed on normal and malignant plasma cells, pre-B cells, mesenchymal cells, epithelial cells, and endothelial cells.

CD138 binds to many extracellular matrix proteins through its heparan sulfate side-chains, including fibronectin, collagen types I, III, and V, tenascin, and thrombospondin. It participates in cell proliferation, cell migration and cell-matrix interactions via its receptor for extracellular matrix proteins. It is a useful marker for plasma cells.

Fluorescent Dyes	Excitation Source	Excitation Max	Emission Max
FITC	Blue 488 nm	494 nm	520 nm
PE	Blue 488 nm, Green 532 nm, Yellow/Green 561 nm	496 nm	578 nm
APC	Red 633 nm	650 nm	660 nm

Data Demonstration

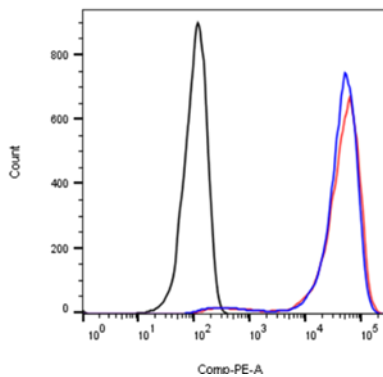


Figure 1. RPMI 8226 cells were stained with CD138 antibody (FL12), mAb, Mouse (GenScript, V07801; red curve) or with a negative control antibody (black curve), or with a positive control antibody (blue curve) followed by R-PE conjugated anti-mouse IgG in flow cytometric analysis.

For research use only