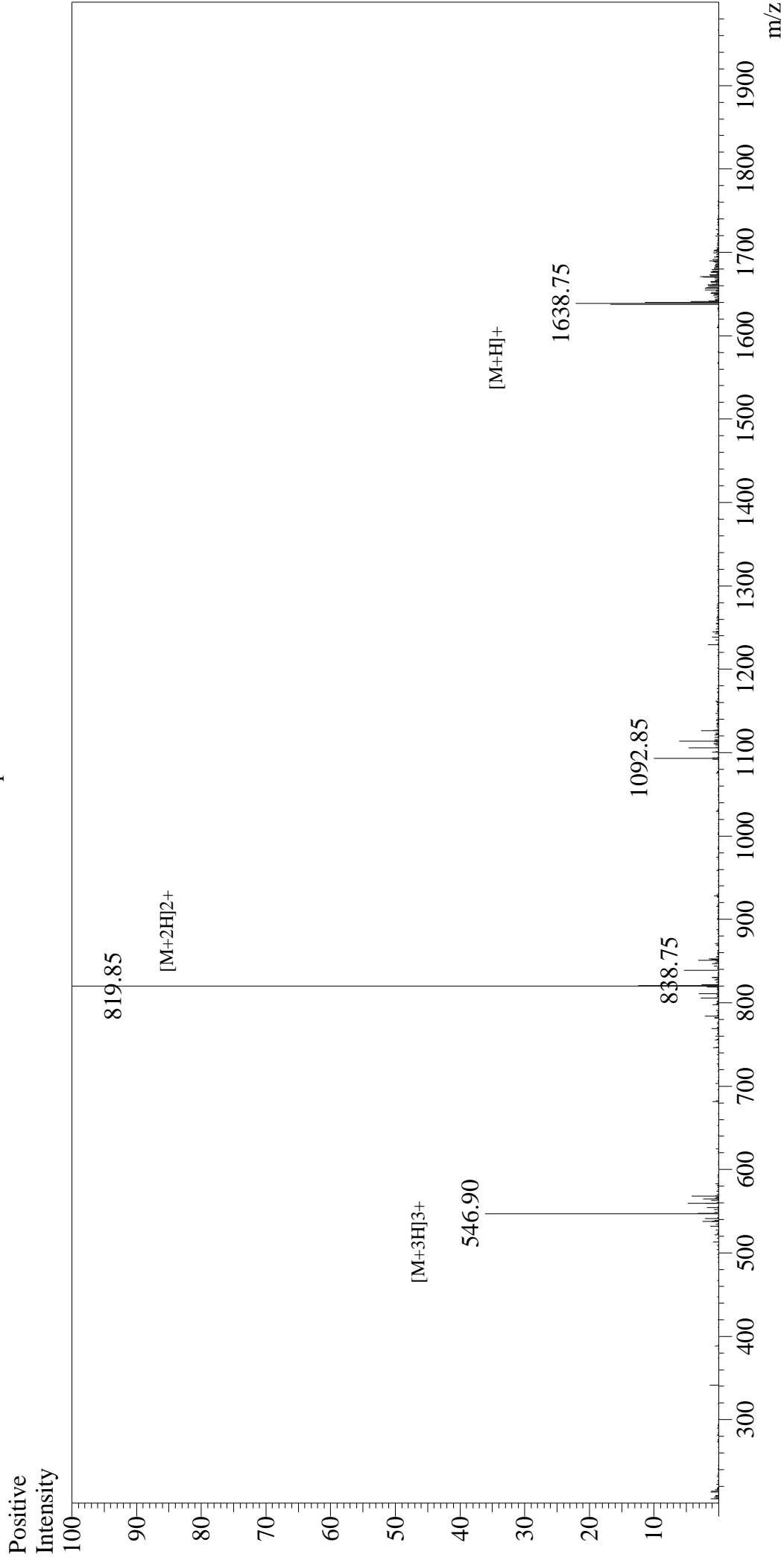


Mass Spectrum



Sample Information
User : Gary
Month-Day Processed : 01/23/16
Time Processed : 11:55:38
Injection Volume : 0.2
Sample Name : Somatostatin
Cat No. : RPI0226
Lot No. : PE1741601
Theoretical MW : 1637.88
Observed MW : 1637.70

Interface : ESI
Nebulizing Gas Flow : 1.5L/min
CDL Temp : 250°C
Block Temp : 200°C

Interface Bias : +4.5kV
Drying Gas Flow : 5 L/min
T.Flow : 0.2ml/min
B.conc : 50%H₂O/50%MeOH