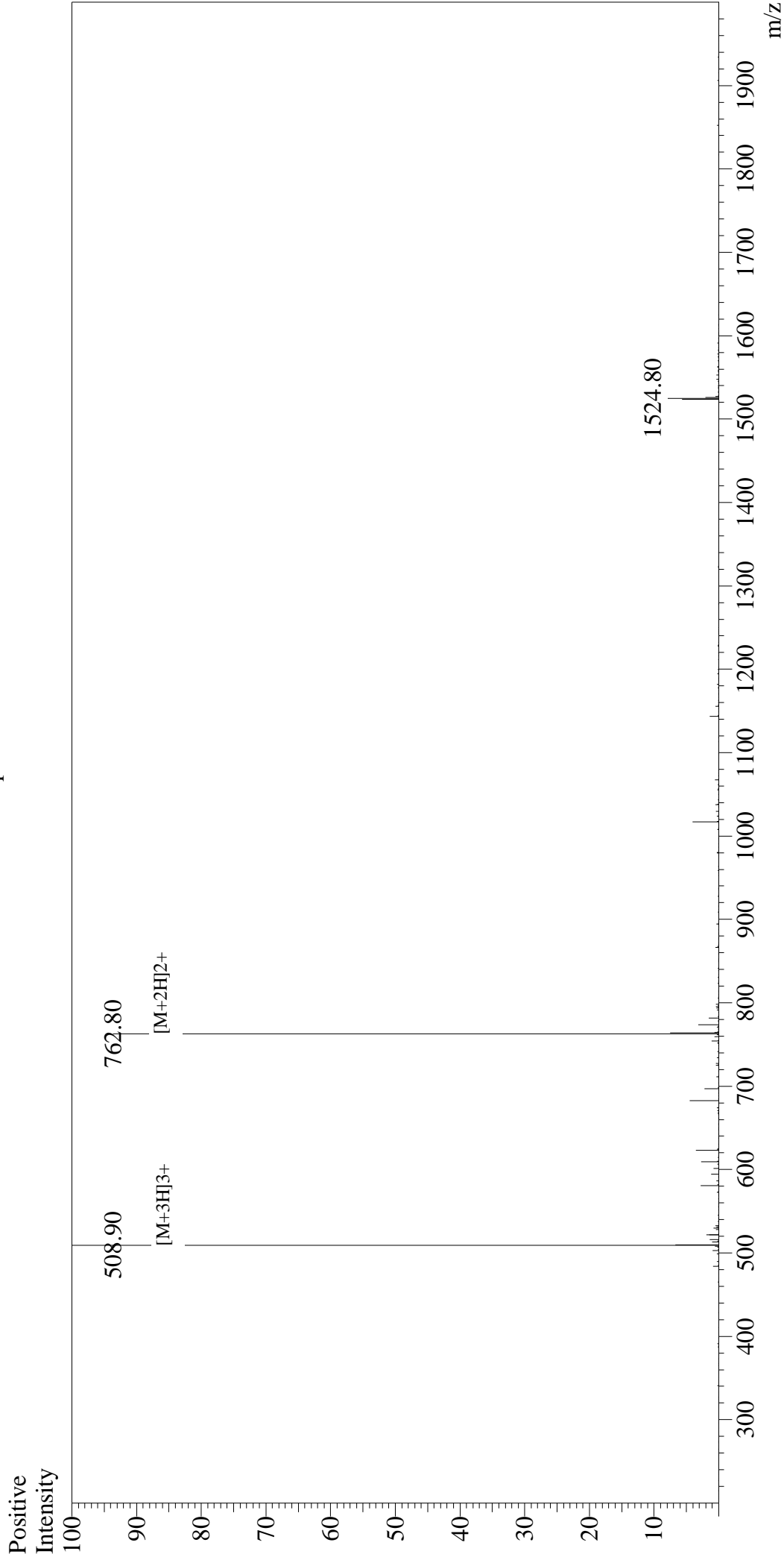


Mass Spectrum



Sample Information

User : Gary
Month-Day Processed : 01/23/16
Time Processed : 11:50:29
Injection Volume : 0.2
Sample Name : Osteogenic Growth Peptide, OGP
Cat No. : RP20311
Lot No. : PE1751601
Theoretical MW : 1523.76
Observed MW : 1523.70

Interface : ESI
Nebulizing Gas Flow : 1.5L/min
CDL Temp : 250°C
Block Temp : 200°C

Interface Bias : +4.5kV
Drying Gas Flow : 5 L/min
T.Flow : 0.2ml/min
B.conc : 50%H2O/50%MeOH