

Rev03
Update: Dec,14,2021

DATASHEET

H1N1 HA antibody, pAb, Rabbit

Cat. No.: A01500

Overview

Specificity	GenScript Rabbit Anti-H1N1 HA Polyclonal Antibody detects influenza A (H1N1) HA protein.
Host Species	Rabbit
Immunogen	KLH-coupled synthetic peptide within 350~400 of Influenza A (H1N1) 2009 virus HA protein (GenBank: CY039999).
Species Reactivity	Influenza A virus (H1N1)
Conjugate	Unconjugated

Applications

Working concentrations for specific applications should be determined by the investigator. The appropriate concentrations may be affected by secondary antibody affinity, antigen concentration, the sensitivity of the method of detection, temperature, the length of the incubations, and other factors. The suitability of this antibody for applications other than those listed below has not been determined. The following concentration ranges are recommended starting points for this product.

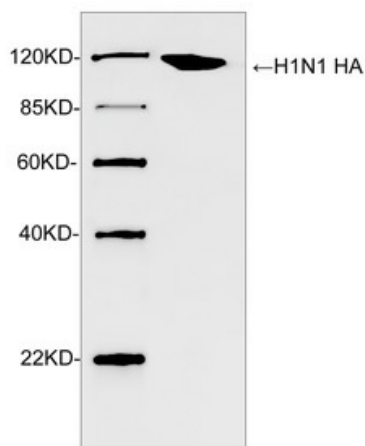
Application	Recommended Usage
Western Blot	0.5-1 µg/ml
Other applications	User-optimized

Properties

Form	Lyophilized
Storage Buffer	lyophilized with PBS, pH 7.4, containing 0.02% sodium azide.
Reconstitution	Reconstitute the lyophilized powder with deionized water (or equivalent) to an final concentration of 0.5 mg/mL.
Storage Instructions	The antibody is stable in lyophilized form if stored at -20°C or below. The reconstituted antibody can be stored for 2-3 weeks at 2-8°C. For long term storage, aliquot and store at -20°C or below. Avoid repeated freezing and thawing cycles.

Purification	Affinity chromatography
Isotype	Rabbit IgG
Clonality	Polyclonal
Clone Id	Not applicable

Examples



Western blot analysis of H1N1 HA recombinant protein using Rabbit Anti-H1N1 HA Polyclonal Antibody (GenScript, A01500, 1 $\mu\text{g/ml}$) The signal was developed with IRDye™ 800 Conjugated Goat Anti-Rabbit IgG. Predicted Size: 115 KD Observed Size: 115 KD

Background

Target Background : Influenza A (H1N1) virus is a subtype of influenza virus A and the most common cause of influenza (flu) in humans. A strain of swine-origin H1N1 was responsible for the 2009 flu pandemic. HA (Hemagglutinin) is an antigenic glycoprotein found on the surface of the H1N1 virus. And it is responsible for binding the virus to the cell that is being infected. GenScript Rabbit Anti-H1N1 HA Polyclonal Antibody is developed in rabbit using a KLH-coupled synthetic peptide within 350~400 of Influenza A (H1N1) 2009 virus HA protein (GenBank: CY039999).

Synonyms : Rabbit Anti-H1N1 HA polyclonal antibody; Hemagglutinin of Influenza A Virus antibody

For laboratory research use only. Direct human use, including taking orally and injection and clinical use are forbidden.