

Rev03
Update: Dec,14,2021

DATASHEET

NCAM Antibody, pAb, Rabbit

Cat. No.: A01415

Overview

Specificity	GenScript Rabbit Anti-NCAM Polyclonal Antibody detects endogenous levels of rat and mouse NCAM. It is predicted to react with human NCAM according to sequence homology.
Host Species	Rabbit
Immunogen	KLH-coupled synthetic peptide within cytoplasmic residues 780-830 of human NCAM (Swiss Prot: P13591).
Species Reactivity	Rat and mouse. This product has not been tested with other species yet.
Conjugate	Unconjugated

Applications

Working concentrations for specific applications should be determined by the investigator. The appropriate concentrations may be affected by secondary antibody affinity, antigen concentration, the sensitivity of the method of detection, temperature, the length of the incubations, and other factors. The suitability of this antibody for applications other than those listed below has not been determined. The following concentration ranges are recommended starting points for this product.

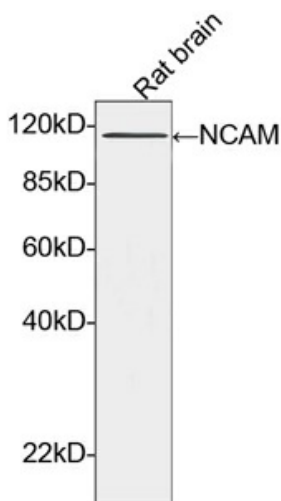
Application	Recommended Usage
ELISA	0.05-0.2 µg/ml
Western blot	0.5-1 µg/ml
Other Applications	User-optimized

Properties

Form	Lyophilized
Storage Buffer	lyophilized with PBS, pH 7.4, containing 0.02% sodium azide
Reconstitution	Reconstitute the lyophilized powder with deionized water (or equivalent) to an final concentration of 0.5 mg/mL.

Storage Instructions	The antibody is stable in lyophilized form if stored at -20°C or below. The reconstituted antibody can be stored for 2-3 weeks at 2-8°C. For long term storage, aliquot and store at -20°C or below. Avoid repeated freezing and thawing cycles.
Purification	Affinity chromatography
Isotype	Rabbit IgG
Clonality	Polyclonal
Clone Id	Not applicable
Note	Small volumes of antibody will occasionally become entrapped in the seal of the product vial during shipment and storage. Before use, briefly centrifuge the vial to dislodge any liquid in the container's cap.

Examples



Western blot analysis of tissue lysates using NCAM Antibody, pAb, Rabbit (GenScript, A01415, 1 µg/ml)
 The signal was developed with IRDye™ 800 Conjugated Goat Anti-Rabbit IgG.
 Predicted Size: 120 kD
 Observed Size: 115 kD

Background

Target Background : NCAM (neural cell adhesion molecule, CD56) is an adhesion glycoprotein. It contains five extracellular immunoglobulin-like domains followed by two fibronectin type III repeats. Alternative splicing gives rise to different cytoplasmic domains. NCAM is involved in neuronal attachment, neurite extension, and cell-cell interactions through homo and heterophilic interactions. During sialylation, polysialic acid (PSA) carbohydrates are attached to the extracellular part of NCAM. It is expressed on most neuroectodermal derived cell lines, tissues, and neoplasm. GenScript Rabbit Anti-NCAM Polyclonal Antibody is developed in rabbit using a KLH-coupled synthetic peptide within cytoplasmic residues 780-830 of human NCAM (Swiss Prot: P13591).

Synonyms : Rabbit Anti-NCAM pAb;

For laboratory research use only. Direct human use, including taking orally and injection and clinical use are forbidden.