

Rev05
Update: Nov,03,2023

DATASHEET

NWSHPQFEK Antibody, pAb, Rabbit

Cat. No.: A00626

Overview

Specificity	This antibody recognizes NWSHPQFEK tagged fusion protein.
Host Species	Rabbit
Immunogen	This epitope tag peptide NWSHPQFEK conjugated to KLH
Conjugate	Unconjugated

Applications

Working concentrations for specific applications should be determined by the investigator. The appropriate concentrations may be affected by secondary antibody affinity, antigen concentration, the sensitivity of the method of detection, temperature, the length of the incubations, and other factors. The suitability of this antibody for applications other than those listed below has not been determined. The following concentration ranges are recommended starting points for this product.

Application	Recommended Usage
ELISA	0.05-0.2 µg/ml
Western Blot	0.1-1.0 µg/ml

Properties

Form	Lyophilized
Storage Buffer	Lyophilized with PBS, pH 7.4, containing 0.02% sodium azide.
Reconstitution	Reconstitute the lyophilized powder with deionized water (or equivalent) to a final concentration of 0.5 mg/ml.
Storage Instructions	The lyophilized product remains stable for up to 1 year at -20 °C from the date of receipt. Upon reconstitution, it can be stored for 2-3 weeks at 2-8 °C or for up to 12 months at -20 °C or below. Avoid repeated freezing and thawing cycles.
Purification	Affinity chromatography
Isotype	Rabbit IgG

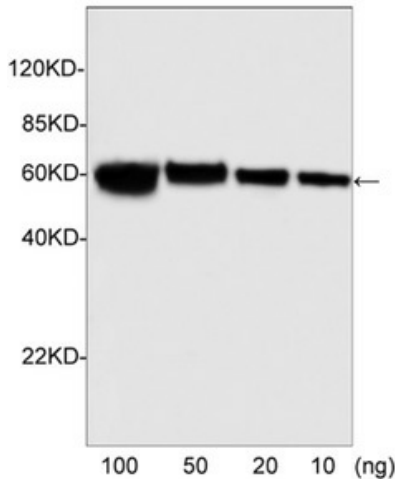
GenScript USA, Inc.

860 Centennial Ave. Piscataway, NJ 08854

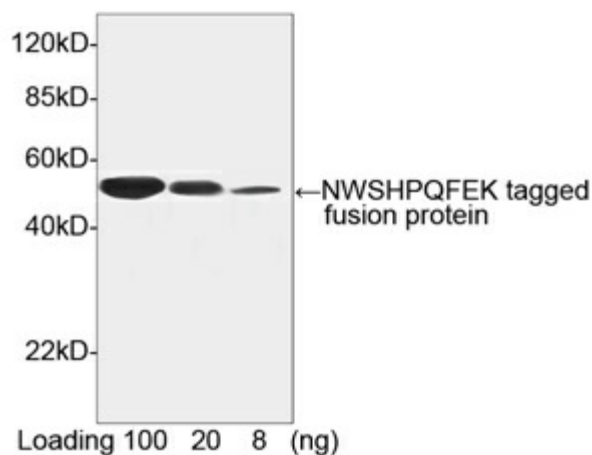
Tel: 1-732-885-9188

Clonality	Polyclonal
Clone ID	Not applicable

Examples



Western blot analysis of C-terminal NWSHPQFEK tagged fusion proteins expressed in *E. coli* cell lysate using NWSHPQFEK-tag Antibody, pAb, Rabbit (GenScript, A00626, 1 µg/ml)
 The signal was developed with IRDye™ 800 Conjugated Goat Anti-Rabbit IgG.



Western blot analysis of NWSHPQFEK-tagged fusion protein using NWSHPQFEK Antibody, pAb, Rabbit (GenScript, A00626, 1 µg/ml)
 The signal was developed with Goat Anti-Rabbit IgG (H&L) [HRP] Polyclonal Antibody (GenScript, A00098, 1:10,000) and LumiSensor™ HRP Substrate Kit (GenScript, L00221)
 Predicted Size: 48 kD
 Observed Size: 48 kD

Background

Target Background : Well-characterized antibodies for epitope tags consisting of short sequences have been widely used in the study of protein expression in various systems. The NWSHPQFEK, a nine-amino acid peptide that is capable of binding to the biotin pocket of streptavidin was engineered. GenScript Rabbit Anti-NWSHPQFEK Polyclonal Antibody is developed in rabbit using a synthetic NWSHPQFEK peptide conjugated to KLH.

Synonyms : Rabbit Anti-NWSHPQFEK Polyclonal Antibody; Anti-NWSHPQFEK

For laboratory research use only. Direct human use, including taking orally and injection and clinical use are forbidden.

生产商：南京金斯瑞生物科技有限公司 江苏省南京市江宁区科学园雍熙路28号

Manufacturer: Nanjing GenScript Biotech Co., Ltd. No. 28Yongxi Road, Jiangning District, Nanjing, Jiangsu, China