

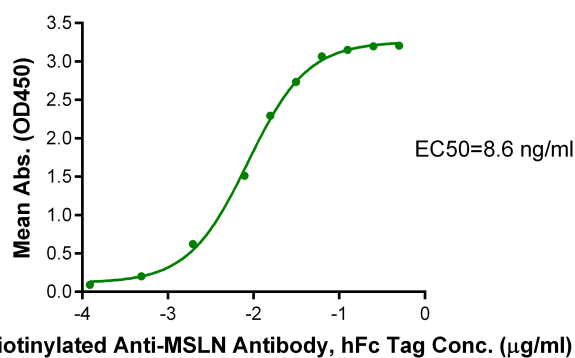
# MSLN/Mesothelin(487-598) hFc Chimera, Human

Cat. No.: Z03864

## Product Introduction

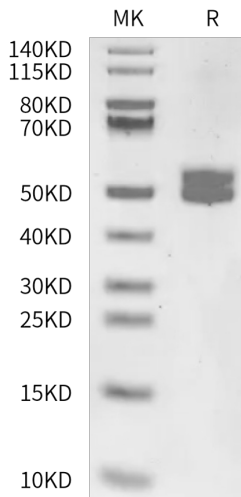
<b>Species</b>	Human
<b>Protein Construction</b>	<div style="display: flex; align-items: center; gap: 10px;"> <div style="background-color: #0056b3; color: white; padding: 5px; text-align: center;">             MSLN/Mesothelin (Met487-Ser598)              Accession # Q13421-3  <small>N-term</small> </div> <div style="background-color: #76b82a; color: white; padding: 5px; text-align: center;">             hFc  <small>C-term</small> </div> </div>
<b>Purity</b>	> 95% as determined by Bis-Tris PAGE
<b>Endotoxin Level</b>	Less than 1EU per µg by the LAL method.
<b>Biological Activity</b>	Measured by its binding ability in a functional ELISA. Test result was comparable to standard batch.
<b>Expression System</b>	HEK293
<b>Theoretical Molecular Weight</b>	38.35 kDa
<b>Apparent Molecular Weight</b>	Due to glycosylation, the protein migrates to 47-57 kDa based on Bis-Tris PAGE result.
<b>Formulation</b>	Lyophilized from a 0.22 µm filtered solution in PBS, pH 7.4.
<b>Reconstitution</b>	Centrifuge the tube before opening. Reconstituting to a concentration more than 100 µg/ml is recommended. Dissolve the lyophilized protein in distilled water.
<b>Storage &amp; Stability</b>	Upon receiving, the product remains stable for 6 months at -20°C or below. Upon reconstitution, the product should be stable for 3 months at -80°C. Avoid repeated freeze-thaw cycles.

## Examples

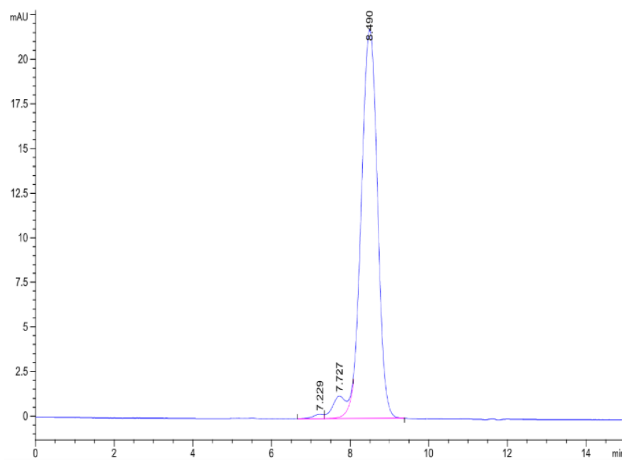


Immobilized MSLN/Mesothelin(487-598) hFc Chimera, Human, hFc Tag at 1 µg/ml (100 µl/well) on the plate. Dose response curve for Biotinylated Anti-MSLN Antibody, hFc Tag with the EC50 of 8.6ng/ml determined by ELISA.

MSLN/Mesothelin(487-598) hFc Chimera, Human on Bis-Tris  
PAGE under reduced condition. The purity is greater than 95%.



The purity of MSLN/Mesothelin(487-598) hFc Chimera, Human  
is greater than 95% as determined by SEC-HPLC.



## Background

**Target Background :** Mesothelin, also known as MSLN, is encoded by the MSLN gene. It encodes a precursor protein of 71 kDa that is processed to a 31 kDa shed protein called megakaryocyte potentiating factor (MPF) and a 40 kDa fragment, mesothelin. MSLN is attached to the cell membrane by a glycosyl-phosphatidylinositol (GPI) anchor. It is a differentiation antigen which is highly expressed in several human cancers, including virtually all mesotheliomas and pancreatic adenocarcinomas.

**Synonyms :** MSLN; CAK1; Mesothelin; MPF; MPFSMRP; SMR

**For laboratory research use only. Direct human use, including taking orally and injection and clinical use are forbidden.**

Manufacturer: Nanjing GenScript Biotech Co., Ltd. No. 28Yongxi Road, Jiangning District, Nanjing, Jiangsu, China