


Rev03  
 Update: Dec,14,2021

**DATASHEET**

# CA125/MUC16, His & Avi, Human

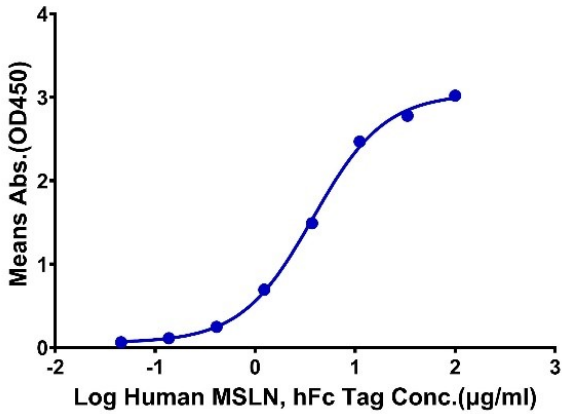
Cat. No.: Z03650

## Product Introduction

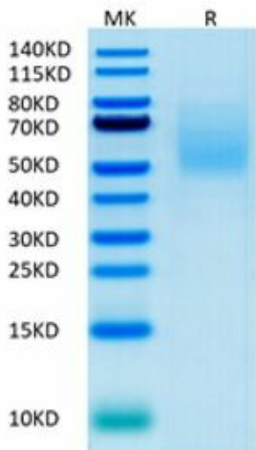
<b>Species</b>	Human
<b>Protein Construction</b>	
<b>Purity</b>	> 95% as analyzed by SDS-PAGE > 95% as analyzed by HPLC
<b>Endotoxin Level</b>	≤ 1 EU/μg of protein by LAL method
<b>Biological Activity</b>	Immobilized Human CA125, His & Avi Tag at 5.0 μg/ml (100 μl/Well). Dose response curve for Human MSLN with the EC <sub>50</sub> of 3.78 μg/ml determined by ELISA.
<b>Expression System</b>	Expi293
<b>Apparent Molecular Weight</b>	50~80 kDa, on SDS-PAGE under reducing conditions.
<b>Formulation</b>	Lyophilized from a 0.22 μm filtered solution in PBS, pH 7.4. Normally 5 % trehalose is added as protectant before lyophilization.
<b>Reconstitution</b>	It is recommended that this vial be briefly centrifuged prior to opening to bring the contents to the bottom. Reconstitute the lyophilized powder in distilled water up to 100 μg/ml.
<b>Storage &amp; Stability</b>	Upon receiving, this product remains stable for up to 6 months at -70°C or -20°C. Avoid repeated freeze-thaw cycles.

## Examples

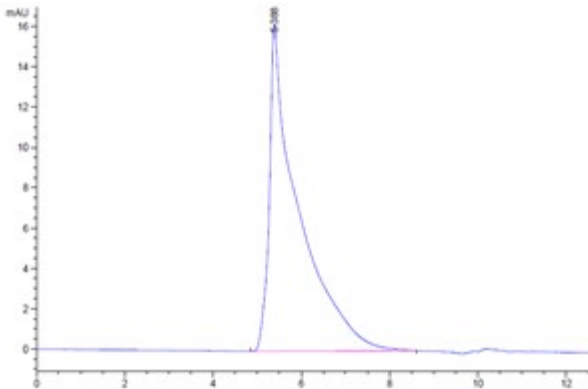
**Human CA125, His Tag ELISA**  
0.5µg Human CA125, His Tag Per Well



Immobilized Human CA125, His & Avi Tag at 5 µg/ml (100 µl/Well). Dose response curve for Human MSLN with the EC<sub>50</sub> of 3.78 µg/ml determined by ELISA.



Recombinant MUC16 Protein on SDS-PAGE under reducing conditions. The purity is greater than 95%.



The purity of Recombinant Human Muc16/CA125 Protein is greater than 95% as determined by SEC-HPLC.

## Background

**Target Background :** MUC16, also known as the CA125 antigen, is a mucin protein that may be found in type I transmembrane or secreted forms that are used monitor the progress of epithelial ovarian cancer therapy. Thought to provide a protective, lubricating barrier against particles and infectious agents at mucosal surfaces. Binding to MSLN mediates heterotypic cell adhesion. This may contribute to the metastasis of ovarian cancer to the peritoneum by initiating cell attachment to the mesothelial epithelium via binding to MSLN.

**Synonyms :** CA125 ovarian cancer antigen; CA125; CA-125; CA125MUC-16; FLJ14303; MUC16; mucin 16, cell surface associated; mucin-16; Ovarian cancer-related tumor marker CA125; Ovarian carcinoma antigen CA125

**For laboratory research use only. Direct human use, including taking orally and injection and clinical use are forbidden.**