

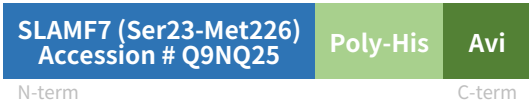
Rev03
 Update: Dec,14,2021

DATASHEET

CS1/CRACC/SLAMF7, His & Avi, Human

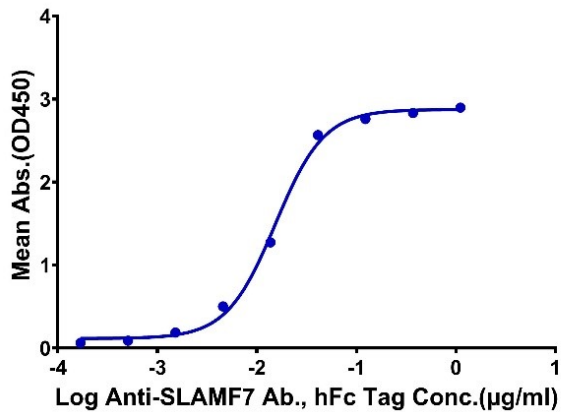
Cat. No.: Z03649

Product Introduction

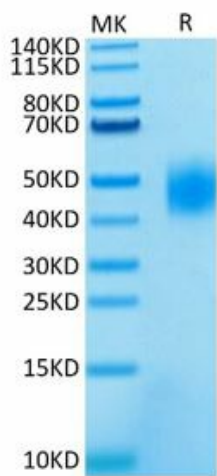
Species	Human
Protein Construction	 <p>SLAMF7 (Ser23-Met226) Accession # Q9NQ25</p> <p>N-term Poly-His Avi C-term</p>
Purity	<p>> 95% as analyzed by SDS-PAGE</p> <p>> 95% as analyzed by HPLC</p>
Endotoxin Level	≤ 1 EU/μg of protein by LAL method
Biological Activity	Immobilized SLAMF7, His & Avi Tag at 1.0 ug/ml (100 ul/Well). Dose response curve for Elotuzumab with the EC ₅₀ of 42.6 ng/ml determined by ELISA.
Expression System	Expi293
Apparent Molecular Weight	40~50 kDa, on SDS-PAGE under reducing conditions.
Formulation	Lyophilized from a 0.22 μm filtered solution in PBS, pH 7.4. Normally 5 % trehalose is added as protectant before lyophilization.
Reconstitution	It is recommended that this vial be briefly centrifuged prior to opening to bring the contents to the bottom. Reconstitute the lyophilized powder in distilled water up to 100 μg/ml.
Storage & Stability	Upon receiving, this product remains stable for up to 6 months at -70°C or -20°C. Avoid repeated freeze-thaw cycles.

Examples

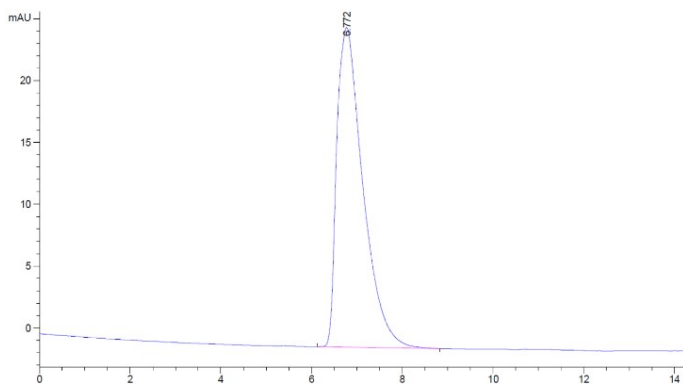
Human SLAMF7, His Tag ELISA
0.1µg Human SLAMF7, His Tag Per Well



Immobilized SLAMF7, His & Avi tag at 1 ug/ml (100 ul/Well).
Dose response curve for Elotuzumab with the EC50 of 42.6 ng/ml determined by ELISA.



Recombinant Human CRACC/SLAMF7 Protein on SDS-PAGE under reducing conditions, the purity is greater than 95%.



The purity of Recombinant Human CRACC/SLAMF7 Protein is greater than 95% as determined by SEC-HPLC.

Background

Target Background : CD2-like receptor activating cytotoxic cells (CRACC), also known as CS1, novel Ly9, SLAMF7, and CD319, is a 65-75 kDa type I transmembrane glycoprotein in the SLAM subgroup of the CD2 family, a self-ligand receptor of the signaling lymphocytic activation molecule (SLAM) family. SLAM receptors triggered by homo- or heterotypic cell-cell interactions are modulating the activation and differentiation of a wide variety of immune cells and thus are involved in the regulation and interconnection of both innate and adaptive immune responses.

Synonyms : CD319 antigen; CD319; 19A; CD2 subset 1; CD2-like receptor activating cytotoxic cells; CRACC; CRACCCD2-like receptor-activating cytotoxic cells; CS119A24 protein; Membrane protein FOAP-12; novel LY9 (lymphocyte antigen 9) like protein; Novel Ly9; Protein 19A; SLAM family member 7; SLAMF7; CS1

For laboratory research use only. Direct human use, including taking orally and injection and clinical use are forbidden.