

Rev04
 Update: Feb,09,2023

DATASHEET

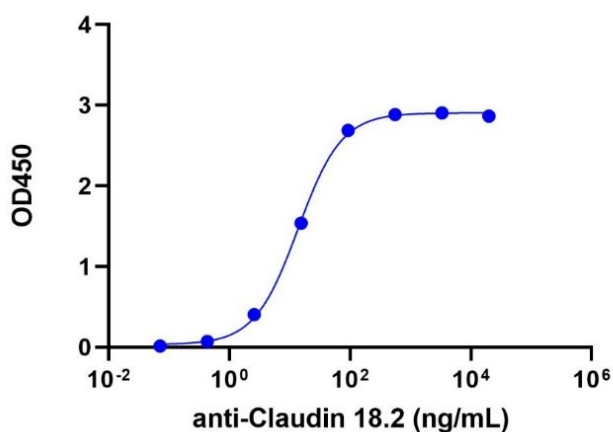
CLDN18.2, His, Human

Cat. No.: Z03504

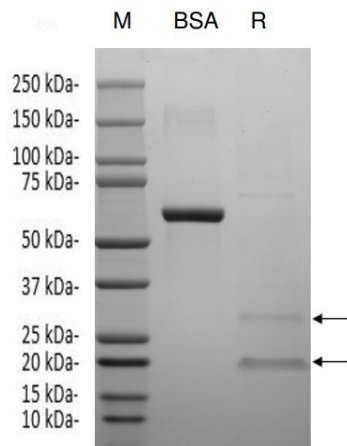
Product Introduction

Species	Human
Protein Construction	<div style="display: flex; align-items: center; gap: 10px;"> <div style="background-color: #4a7c9c; color: white; padding: 5px; border-radius: 3px;">Poly-His</div> <div style="background-color: #4a7c9c; color: white; padding: 5px; border-radius: 3px;">CLDN18.2 (Met1-Lys207) Accession # P56856-2</div> </div> <div style="display: flex; justify-content: space-between; margin-top: 5px; font-size: small;"> N-term C-term </div>
Purity	> 80% as analyzed by SDS-PAGE
Biological Activity	Immobilized CLDN18.2, His, Human (Cat. No.: Z03504) at 1.0 µg/mL (100µl/well). Dose response curve for anti-Claudin 18.2 Antibody with the EC ₅₀ of 13.75ng/mL determined by ELISA.
Expression System	Insect Cells
Theoretical Molecular Weight	27.7 kDa
Formulation	Supplied as a solution in 50 mM Hepes, 500 mM NaCl, 10% glycerol, 0.2% DDM, 0.04% CHS, pH 7.5.
Concentration	Please refer to the COA for the specific lot.
Storage & Stability	Upon receiving, this product remains stable for up to 6 months at -80°C. Please avoid repeated freeze-thaw cycles.

Examples



Immobilized CLDN18.2, His, Human (Cat. No.: Z03504) at 1µg/mL (100µl/well). Dose response curve for anti-Claudin 18.2 Antibody with the EC₅₀ of 13.75ng/mL determined by ELISA.



Lane BSA: 2 μ g BSA

Lane R: 2 μ g CLDN18.2, reducing(R), no heat treatment before loading

> 90% as analyzed by SDS-PAGE

Background

Target Background : Claudin-18 is a protein that in humans is encoded by the CLDN18 gene. CLDN18 belongs to the large claudin family of proteins, which form tight junction strands in epithelial cells. The Expression of Isoform A2 (CLDN18.2) is restricted to the stomach mucosa where it is predominantly observed in the epithelial cells of the pit region and the base of the gastric glands including exocrine and endocrine cells (at protein level). CLDN18.2 is founded to be abundant in gastric tumors, Experimental antibody IMAB362 targets Claudin 18.2 to help treat gastric cancers.

Synonyms : Claudin-18; CLDN18; SFTA5; SFTPJ; claudin 18

For laboratory research use only. Direct human use, including taking orally and injection and clinical use are forbidden.

生产商: 南京金斯瑞生物科技有限公司 江苏省南京市江宁区科学园雍熙路28号

Manufacturer: Nanjing GenScript Biotech Co., Ltd. No. 28Yongxi Road, Jiangning District, Nanjing, Jiangsu, China