

Rev04
 Update: Aug,17,2022

DATASHEET

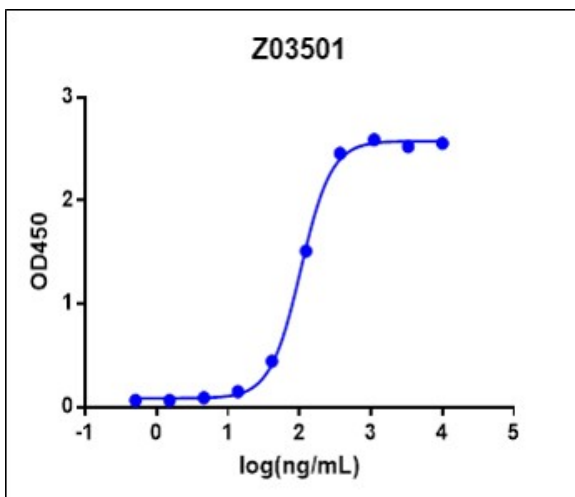
SARS-CoV-2 Spike protein (S1)

Cat. No.: Z03501

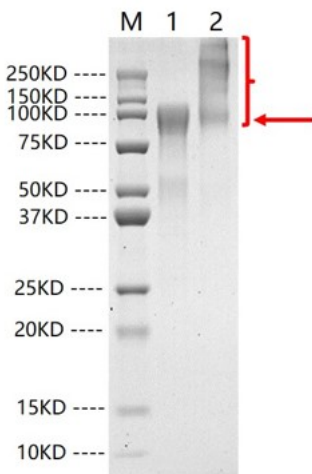
Product Introduction

Species	SARS-CoV-2
Protein Construction	S1 protein (Gln14-Arg685) Accession # P0DTC2
Purity	> 90% as analyzed by SDS-PAGE
Endotoxin Level	< 0.2 EU/μg of protein by gel clotting method
Biological Activity	SARS-CoV-2 Spike protein (S1) can bind with Human ACE2 in functional ELISA assay.
Expression System	293 Cells
Theoretical Molecular Weight	78.3 kDa (Additional amino acids from the vector are included. The sequence of them is confidential.)
Formulation	Supplied as a solution in PBS pH 7.4
Concentration	Please refer to the COA for the specific lot.
Storage & Stability	Upon receiving, this product remains stable for up to 6 months at -20°C or below. Avoid repeated freeze-thaw cycles.

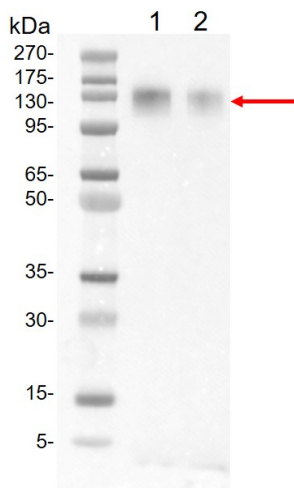
Examples



Immobilized SARS-CoV-2 Spike protein (S1) (Cat. No. Z03501) at 1 μg/mL can bind ACE-2 Fc Chimera, Human (Cat. No. Z03484) with a serial dilution. Mouse Anti-Human IgG Fc Antibody[HRP], mAb (Cat.No. A01854) is used as a secondary antibody (0.1 μg/mL).



Lane 1: 2 μ g of SARS-CoV-2 Spike protein (S1), reducing(R)
 Lane 2: 2 μ g of SARS-CoV-2 Spike protein (S1), non-reducing(NR)
 > 85% as analyzed by SDS-PAGE



Western blot analysis of SARS-CoV-2 Spike protein (S1) (GenScript, Z03501) using S1 Antibody(GenScript, A02053).
 Lane 1: 10 ng of Z03501
 Lane 2: 5ng of Z03501

Background

Target Background : SARS-CoV-2 (Severe Acute Respiratory Syndrome Coronavirus 2) also known as 2019-nCoV (2019 Novel Coronavirus) is a virus that causes illnesses ranging from the common cold to severe diseases. SARS-CoV-2 Spike Protein is composed of S1 domain and S2 domain. S1 contains a receptor-binding domain (RBD) that can specifically bind to angiotensin-converting enzyme 2 (ACE2), the receptor on target cells. S protein plays an important role in the induction of neutralizing-antibodies and T-cell responses, as well as protective immunity.

Synonyms : SARS-CoV-2 S1 protein; 2019-nCoV S1 protein

For laboratory research use only. Direct human use, including taking orally and injection and clinical use are forbidden.