

Rev03
 Update: Dec,14,2021

DATASHEET

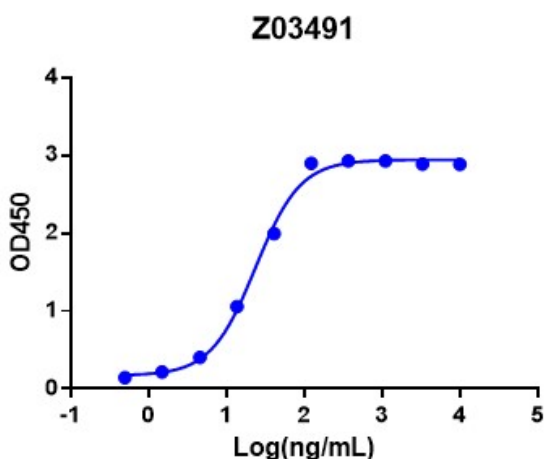
SARS-CoV-2 Spike protein (RBD, mFc Tag)

Cat. No.: Z03491

Product Introduction

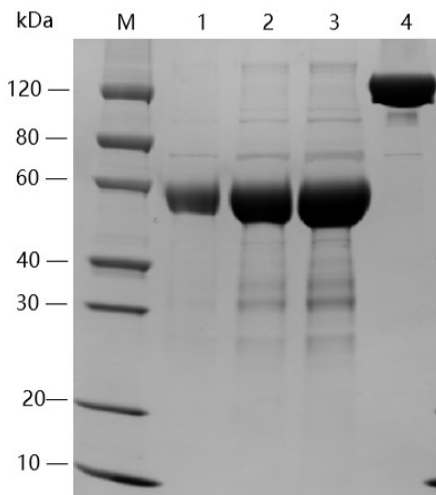
Species	SARS-CoV-2
Protein Construction	<div style="display: flex; justify-content: space-around; align-items: center;"> <div style="background-color: #0056b3; color: white; padding: 5px; text-align: center;"> Spike RBD (Gly311-Asn532) Accession # P0DTC2 </div> <div style="background-color: #76b82a; color: white; padding: 5px; text-align: center;"> mFc </div> </div> <div style="display: flex; justify-content: space-around; margin-top: 5px;"> N-term C-term </div>
Purity	> 90% as analyzed by SDS-PAGE
Endotoxin Level	< 0.2 EU/μg of protein by gel clotting method
Biological Activity	SARS-CoV-2 Spike protein (RBD, mFc Tag) can bind with Human ACE2 in functional ELISA assay.
Expression System	293 Cells
Theoretical Molecular Weight	50 kDa
Formulation	Supplied as a solution in PBS pH 7.4
Concentration	Please refer to the COA for the specific lot.
Storage & Stability	Upon receiving, this product remains stable for up to 6 months at -20°C or below. Avoid repeated freeze-thaw cycles.

Examples



Immobilized ACE-2 Fc Chimera, Human (Cat. No. Z03484) at 2 μg/mL can bind SARS-CoV-2 Spike protein (RBD, mFc Tag) (Cat. No. Z03491) with a serial dilution.

Goat anti Mouse IgG Fc [HRP], pAb is used as a secondary antibody (0.1 μg/mL).



Lane 1: 1µg of SARS-CoV-2 Spike protein (RBD, mFc Tag), reducing(R)

Lane 2: 3µg of SARS-CoV-2 Spike protein (RBD, mFc Tag), reducing(R)

Lane 3: 5µg of SARS-CoV-2 Spike protein (RBD, mFc Tag), reducing(R)

Lane 4: 5µg of SARS-CoV-2 Spike protein (RBD, mFc Tag), non-reducing(NR)

> 85% as analyzed by SDS-PAGE

Background

Target Background : SARS-CoV-2 (Severe Acute Respiratory Syndrome Coronavirus 2) also known as 2019-nCoV (2019 Novel Coronavirus) is a virus that causes illnesses ranging from the common cold to severe diseases. SARS-CoV-2 Spike Protein is composed of S1 domain and S2 domain. S1 contains a receptor-binding domain (RBD) that can specifically bind to angiotensin-converting enzyme 2 (ACE2), the receptor on target cells. It is believed that SARS-CoV-2 Spike Protein (RBD) has potential value for the diagnosis of the virus.

Synonyms : SARS-CoV-2 SP RBD; 2019-nCoV SP RBD

For laboratory research use only. Direct human use, including taking orally and injection and clinical use are forbidden.