

Rev03
 Update: Dec,14,2021

DATASHEET

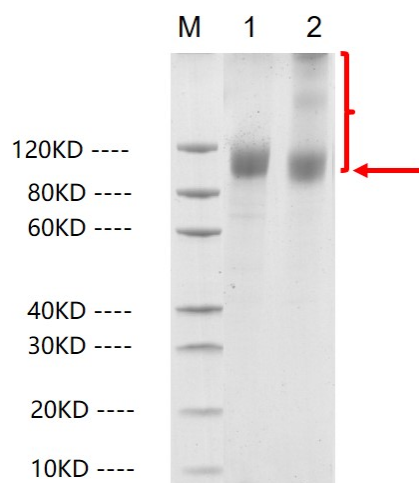
SARS-CoV-2 Spike protein (S1, His Tag)

Cat. No.: Z03485

Product Introduction

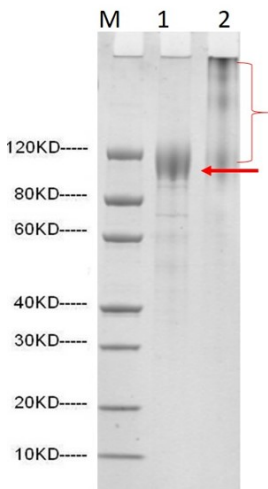
Species	SARS-CoV-2
Protein Construction	<div style="display: flex; align-items: center; justify-content: center;"> <div style="background-color: #0056b3; color: white; padding: 5px; margin-right: 10px;"> S1 protein (Val16-Arg685) Accession # P0DTC2 </div> <div style="background-color: #76b82a; color: white; padding: 5px; margin-left: 10px;"> Poly-His </div> </div> <div style="display: flex; justify-content: space-around; margin-top: 5px;"> N-term C-term </div>
Purity	> 90% as analyzed by SDS-PAGE
Endotoxin Level	< 0.2 EU/μg of protein by gel clotting method
Biological Activity	SARS-CoV-2 Spike protein (S1) can bind with Human ACE2 in functional ELISA assay.
Expression System	293 Cells
Theoretical Molecular Weight	79 kDa
Formulation	Supplied as a solution in PBS pH 7.2 containing 10% glycerol.
Concentration	Please refer to the COA for the specific lot.
Storage & Stability	Upon receiving, this product remains stable for up to 6 months at -20°C or below. Avoid repeated freeze-thaw cycles.

Examples

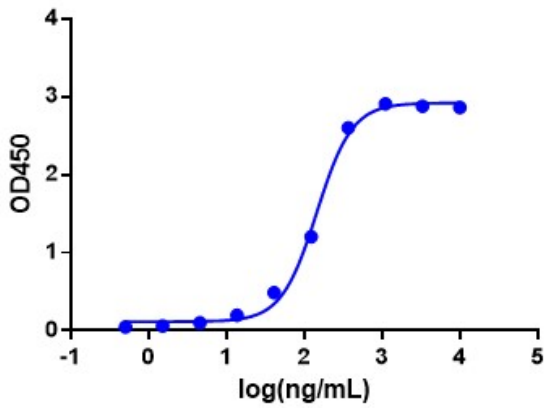


1: 2 μg of S1, reducing (R)
 2: 2 μg of S1, non-reducing (N)
 > 85% as analyzed by SDS-PAGE

> 85% as analyzed by SDS-PAGE

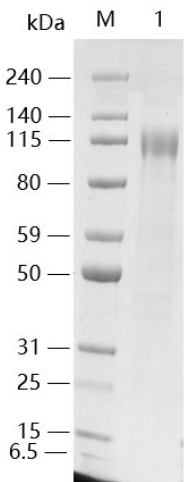


Z03485



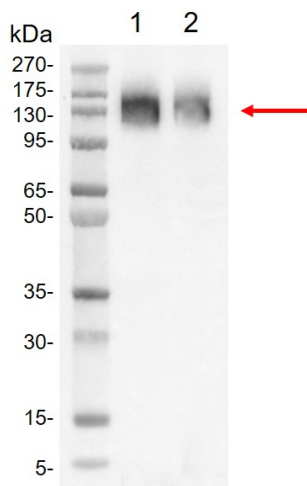
Immobilized SARS-CoV-2 S1 protein(His Tag) (Cat. No. Z03485) at 1 µg/mL can bind ACE-2 Fc Chimera, Human (Cat. No. Z03516) with a serial dilution.

Mouse Anti-Human IgG Fc Antibody[HRP], mAb (Cat.No. A01854) is used as a secondary antibody (0.1 µg/mL).

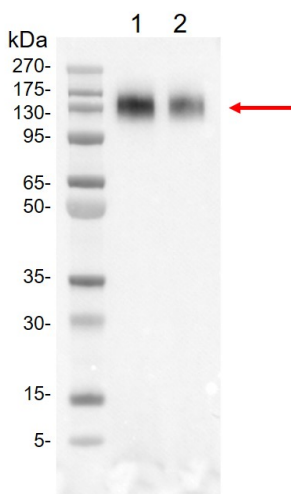


Lane 1: 1µg of SARS-CoV-2 Spike protein (S1, His Tag), reducing(R)

> 95% as analyzed by SDS-PAGE



Western blot analysis of SARS-CoV-2 S1 protein (His-tagged) (GenScript, Z03485) using His Antibody (GenScript, A00186).
Lane 1: 10 ng of Z03485
Lane 2: 5 ng of Z03485



Western blot analysis of SARS-CoV-2 S1 protein (His-tagged) (GenScript, Z03485) using S1 Antibody (GenScript, A02053).
Lane 1: 10 ng of Z03485
Lane 2: 5 ng of Z03485

Background

Target Background : SARS-CoV-2 (Severe Acute Respiratory Syndrome Coronavirus 2) also known as 2019-nCoV (2019 Novel Coronavirus) is a virus that causes illnesses ranging from the common cold to severe diseases. SARS-CoV-2 Spike Protein is composed of S1 domain and S2 domain. S1 contains a receptor-binding domain (RBD) that can specifically bind to angiotensin-converting enzyme 2 (ACE2), the receptor on target cells. S protein plays an important role in the induction of neutralizing antibodies and T-cell responses, as well as protective immunity.

Synonyms : SARS-CoV-2 S1 protein; 2019-nCoV S1 protein

For laboratory research use only. Direct human use, including taking orally and injection and clinical use are forbidden.