

Rev03
 Update: Dec,14,2021

DATASHEET

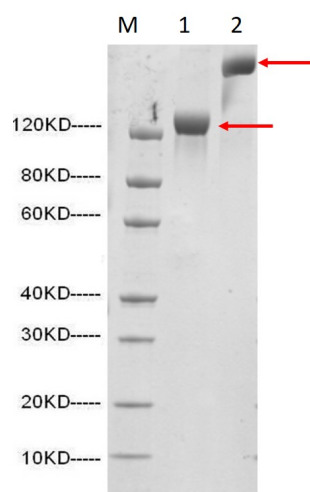
ACE-2, hFc, Human

Cat. No.: Z03484

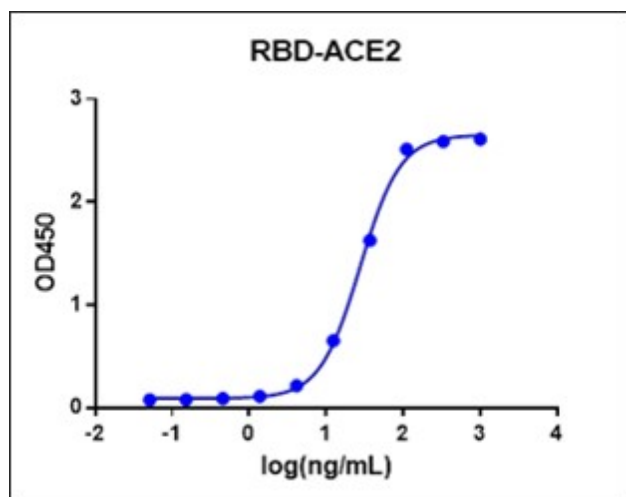
Product Introduction

Species	Human
Protein Construction	<div> <div>ACE-2 (Gln18-Ser740) Accession # Q9BYF1</div> <div>hFc</div> </div> <div> <div>N-term</div> <div>C-term</div> </div>
Purity	> 95% as analyzed by SDS-PAGE
Endotoxin Level	< 1 EU/μg of protein by LAL method
Biological Activity	ACE-2, hFc, Human can bind with S-RBD in functional ELISA assay.
Expression System	Human Cells
Theoretical Molecular Weight	110.5 kDa
Formulation	Supplied as a solution in 20 mM Tris-HCl, 300 mM NaCl, 1 mM ZnCl ₂ , 10% Glycerol, pH 7.4.
Concentration	Please refer to the COA for the specific lot.
Storage & Stability	Upon receiving, this product remains stable for up to 6 months at -20°C or below. Avoid repeated freeze-thaw cycles.

Examples



1: 2 μg of ACE-2 FC protein , reducing (R)
 2: 2 μg of ACE-2 FC protein, non-reducing (N)
 > 95% as analyzed by SDS-PAGE



Immobilized SARS-CoV-2 Spike protein (RBD, His Tag) (Cat. No. Z03483) at 1 μ g/mL can bind ACE-2 Fc Chimera, Human (Cat. No. Z03484) with a serial dilution.

Mouse Anti-Human IgG Fc Antibody[HRP], mAb (Cat. No. A01854) is used as a secondary antibody (0.2 μ g/mL).

Background

Target Background : Angiotensin-Converting Enzyme 2 (ACE-2) is an integral membrane protein and a zinc metalloprotease of the ACE family. The ACE family includes somatic and germinal ACE. ACE-2 cleaves angiotensins I and II as a carboxypeptidase. ACE-2 converts angiotensin I to angiotensin 1-9, and angiotensin II to angiotensin 1-7. ACE 2 is also able to hydrolyze apelin-13 and dynorphin-13 with high efficiency. It has high binding affinity to S-RBD.

Synonyms : Human Angiotensin-Converting Enzyme 2; ACE-2

For laboratory research use only. Direct human use, including taking orally and injection and clinical use are forbidden.