

Rev04
Update: Jan,19,2024

DATASHEET

IL-22, Human

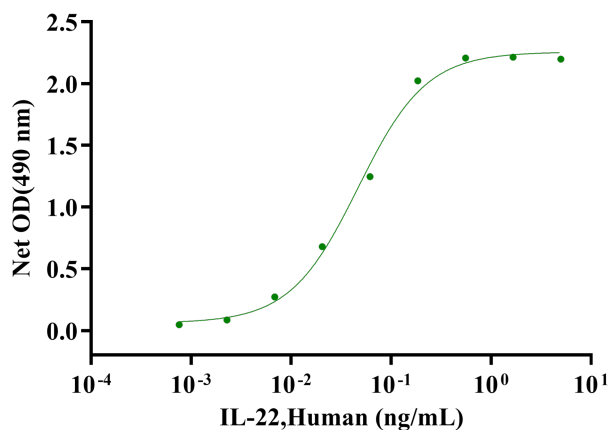
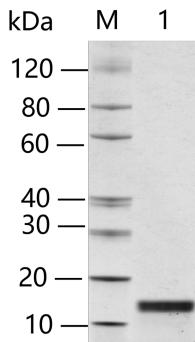
Cat. No.: Z03243

Product Introduction

Species	Human
Protein Construction	Expressed with an N-terminal Met. IL-22 (Ala34-Ile179) Accession # Q9GZX6
Purity	> 98% as analyzed by SDS-PAGE
Endotoxin Level	< 0.2 EU/μg of protein by gel clotting method
Biological Activity	Measured by its ability to induce IL-10 secretion in COLO 205 (human colon carcinoma cells). The ED ₅₀ for this effect is less than 1.0 ng/ml.
Expression System	E. coli
Apparent Molecular Weight	~16.9 kDa, on SDS-PAGE under reducing conditions.
Formulation	Lyophilized after extensive dialysis against PBS.
Reconstitution	It is recommended that this vial be briefly centrifuged prior to opening to bring the contents to the bottom. Reconstitute the lyophilized powder in ddH ₂ O or PBS up to 100 μg/ml.
Storage & Stability	Upon receiving, this product remains stable for up to 6 months at lower than -70°C. Upon reconstitution, the product should be stable for up to 1 week at 4°C or up to 3 months at -20°C. For long term storage it is recommended that a carrier protein (example 0.1% BSA) be added. Avoid repeated freeze-thaw cycles.

Examples

Lane 1: 2 µg of IL-22, Human, reducing (R)
 > 98% as analyzed by SDS-PAGE



Measured by its ability to induce IL-10 secretion in COLO 205 (human colon carcinoma cells). The ED₅₀ for this effect is less than 1.0 ng/ml.

Background

Target Background : Interleukin-22(IL-22) belongs to a group of cytokines called the IL-10 family or IL-10 superfamily (including IL-19, IL-20, IL-24, and IL-26) which are a class of potent mediators of cellular inflammatory responses. It shares use of IL-10R2 in cell signaling with other members of this family, such as IL-10, IL-26, IL-28A/B and IL-29. IL-22 is produced by activated DC and T cells and initiates innate immune responses against bacterial pathogens in epithelial cells such as those in the lung and gut. IL-22 along with IL-17 is produced by splenic L_{Ti}-like cells and Th17 cells and likely plays a role in the coordinated response of both adaptive and innate immune systems. IL-22 signals through a receptor system consisting of IL-10R-β/CRF2-4 and IL-22R, both of which are members of the class II cytokine-receptor family.

Synonyms : IL22; IL-21; IL-22; IL-D110; IL-TIF; ILTIF; TIFIL-23; TIFa; zcyto18; interleukin 22

For laboratory research use only. Direct human use, including taking orally and injection and clinical use are forbidden.

生产商：南京金斯瑞生物科技有限公司 江苏省南京市江宁区科学园雍熙路28号

Manufacturer: Nanjing GenScript Biotech Co., Ltd. No. 28Yongxi Road, Jiangning District, Nanjing, Jiangsu, China