

Rev05
Update: Jan,19,2024

DATASHEET

GM-CSF, Mouse

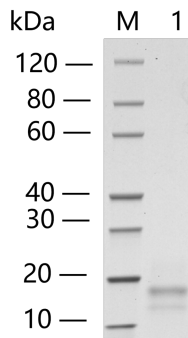
Cat. No.: Z02979

Product Introduction

Species	Mouse
Protein Construction	GM-CSF (Ala18-Lys141) Accession # Q14AD9
Purity	> 95% as analyzed by SDS-PAGE > 95% as analyzed by HPLC
Endotoxin Level	< 0.2 EU/μg of protein by gel clotting method
Biological Activity	ED ₅₀ < 0.05 ng/ml, measured in a cell proliferation assay using mouse FDC-P1 cells, corresponding to a specific activity of > 2.0 × 10 ⁷ units/mg.
Expression System	CHO
Apparent Molecular Weight	15~19 kDa, on SDS-PAGE under non-reducing conditions.
Formulation	Lyophilized after extensive dialysis against PBS.
Reconstitution	It is recommended that this vial be briefly centrifuged prior to opening to bring the contents to the bottom. Reconstitute the lyophilized powder in ddH ₂ O or PBS up to 100 μg/ml.
Storage & Stability	Upon receiving, this product remains stable for up to 6 months at lower than -70°C. Upon reconstitution, the product should be stable for up to 1 week at 4°C or up to 3 months at -20°C. For long term storage it is recommended that a carrier protein (example 0.1% BSA) be added. Avoid repeated freeze-thaw cycles.

Examples

Lane 1: 2 μ g of GM-CSF, Mouse, non-reducing (NR)
> 95% as analyzed by SDS-PAGE



Background

Target Background : Granulocyte Macrophage-Colony Stimulating Factor (GM-CSF) was initially characterized as a growth factor that can support the in vitro colony formation of granulocyte-macrophage progenitors. Granulocyte Macrophage-Colony Stimulating Factor (GM-CSF) is produced by a number of different cell types, including activated T cells, B cells, macrophages, mast cells, endothelial cells, and fibroblasts, in response to cytokine of immune and inflammatory stimuli. Besides granulocyte-macrophage progenitors, Granulocyte Macrophage-Colony Stimulating Factor (GM-CSF) is a growth factor for erythroid, megakaryocyte, and eosinophil progenitors. On mature hematopoietic, monocytes/macrophages and eosinophils. Additionally, Granulocyte Macrophage-Colony Stimulating Factor (GM-CSF) can stimulate the proliferation of a number of tumor cell lines, including osteogenic sarcoma, carcinoma, and adenocarcinoma cell lines.

Synonyms : Granulocyte Macrophage Colony Stimulating Factor; CSF-2; MGI-1GM; GM-CSF; Pluripoietin-alpha; Molgramostin; Sargramostim; MGC131935; MGC138897

For laboratory research use only. Direct human use, including taking orally and injection and clinical use are forbidden.

生产商：南京金斯瑞生物科技有限公司 江苏省南京市江宁区科学园雍熙路28号

Manufacturer: Nanjing GenScript Biotech Co., Ltd. No. 28Yongxi Road, Jiangning District, Nanjing, Jiangsu, China