

Rev05
Update: Jan,19,2024

DATASHEET

IL-15, Human

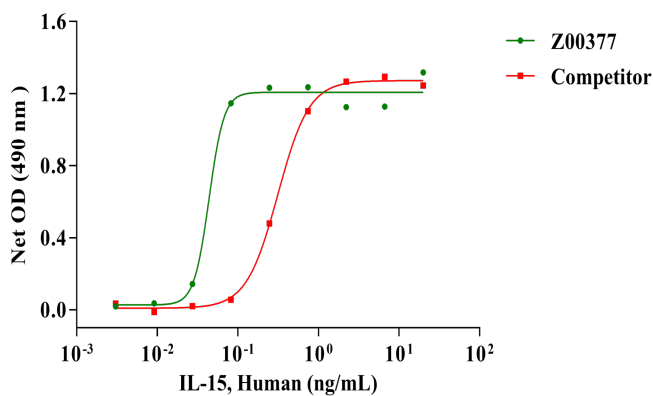
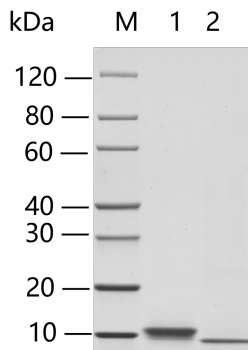
Cat. No.: Z00377

Product Introduction

Species	Human
Protein Construction	IL-15 (Asn49-Ser162) Accession # P40933
Purity	> 95% as analyzed by SDS-PAGE > 95% as analyzed by HPLC
Endotoxin Level	< 1 EU/ μ g of protein by LAL method
Biological Activity	The ED ₅₀ as determined by the dose-dependant stimulation of the proliferation of CTLL-2 was found to be < 0.5 ng/ml, corresponding to a specific activity of > 2.0 \times 10 ⁶ IU/mg.
Expression System	E. coli
Theoretical Molecular Weight	12.5 kDa
N-terminal Sequence Analysis	The sequence of the first five N-terminal amino acids was determined and found to be Asn-Trp-Val-Asn-Val.
Formulation	Lyophilized after extensive dialysis against 20 mM PB, pH 7.5, 150 mM NaCl buffer.
Reconstitution	It is recommended that this vial be briefly centrifuged prior to opening to bring the contents to the bottom. Reconstitute the lyophilized powder in sterile 18 M Ω -cm H ₂ O up to 100 μ g/ml.
Storage & Stability	Upon receiving, this product remains stable for up to 6 months at -70°C or -20°C. Upon reconstitution, the product should be stable for up to 1 week at 4°C or up to 3 months at -20°C. Avoid repeated freeze-thaw cycles.

Examples

Lane 1: 2 µg of IL-15, Human, reducing (R)
 Lane 2: 2 µg of IL-15, Human, non-reducing (NR)
 > 95% as analyzed by SDS-PAGE



The ED₅₀ as determined by the dose-dependent stimulation of the proliferation of CTLL-2 was found to be < 0.5 ng/ml, corresponding to a specific activity of > 2.0 × 10⁶ IU/mg.

Background

Target Background : Interleukin-15 (IL-15) is a cytokine with structural similarity to IL-2. Like IL-2, IL-15 binds to and signals through a complex composed of IL-2/IL-15 receptor beta chain (CD122) and the common gamma chain (gamma-C, CD132). IL-15 is secreted by mononuclear phagocytes (among other cells) following infection by virus. This cytokine induces cell proliferation of natural killer cells, which are cells of the innate immune system whose principal role is to kill virally infected cells. IL-15 can stimulate the proliferation of T-lymphocytes. Stimulation by IL-15 occurs following its interaction with IL-15Rα. This interaction may enhance IL-15' s interaction with IL15Rβγc.

Synonyms : IL15; IL-T; interleukin 15

For laboratory research use only. Direct human use, including taking orally and injection and clinical use are forbidden.

生产商: 南京金斯瑞生物科技有限公司 江苏省南京市江宁区科学园雍熙路28号

Manufacturer: Nanjing GenScript Biotech Co., Ltd. No. 28Yongxi Road, Jiangning District, Nanjing, Jiangsu, China