

Version: 02
 Update: 12/14/2021

Procalcitonin (PCT) Monoclonal Antibodies

Cat. No.	Name	Clone
V01803	Procalcitonin (PCT) Antibody (18D2), mAb, Mouse	18D2
V01804	Procalcitonin (PCT) Antibody (16A1), mAb, Mouse	16A1
V01805	Procalcitonin (PCT) Antibody (18M3), mAb, Mouse	18M3
V01807	Procalcitonin (PCT) Antibody (PE21), mAb, Mouse	PE21
V01809	PCT Antibody (PE9), mAb, Mouse	PE9
V01902	Calcitonin Antibody (12C5), mAb, Mouse	12C5
V01904	Calcitonin Antibody (E72), mAb, Mouse	E72

Specificity All clones recognize human PCT

Epitope	Clone	Recognizing fragment	Epitope
	PE21	N-terminal PCT	20-45
	18D2	Calcitonin	60-92
	16A1	Calcitonin	60-92
	18M3	Calcitonin	60-92
	12C5	Calcitonin	70-85
	E72	Calcitonin	60-92
	PE9	Katacalcin	96-116

Isotype IgG1 for MAbs 18D2, 16A1, E72 and PE9

IgG2a for MAb PE21

IgG2b for MAbs 12C5 and 18M3

Production Cultured *in vitro* under conditions free from animal-derived components

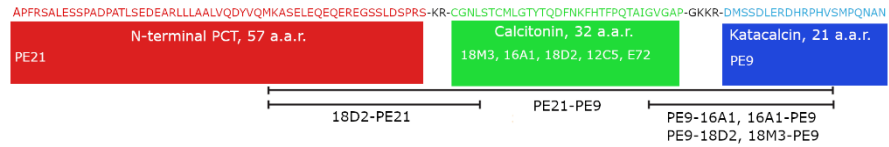
Purification Protein A/G affinity column

Formulation 50 mM Na-citrate, 150 mM NaCl, pH 7.0, containing 0.03% Proclin 300

Storage For long term storage, aliquot and store at -20°C or below. Avoid repeated

freezing and thawing cycles.

Application



Platform	Capture	Detection	Pattern
CLIA	18D2	PE21	N-C
	PE21	PE9	N-K
	PE9	16A1	C-K
	16A1	PE9	C-K
	PE9	18D2	C-K
	18M3	PE9	C-K
	PE9	12C5	C-K
	E72	16A1	C-C
	18D2	16A1	C-C
	18M3	16A1	C-C
TRFIA	16A1	12C5	C-C
	E72	16A1	C-C

Note: N means N-terminal PCT, C means calcitonin, and K means katalcalcin
 Pattern N-C means that in PCT antibody pair, one mAb recognizes N-terminal PCT, another mAb recognizes calcitonin.

Background

PCT is a 116 amino acid (aa) protein. It is comprised of three sections of a 57 aa N-terminal PCT, a 32 aa calcitonin and a 21 aa katalcalcin. Calcitonin is a hormone, derived from PCT cleavage. PCT is a good diagnosis marker for bacterial infection. Other diseases such as sepsis, inflammation, surgery, heat shock, burn injuries and cardiogenic shock can also cause an increase of PCT level in blood.

Note

GenScript can customize this product per customer's request including product size, buffer components, etc.

For laboratory research use only. Direct human use, including taking orally and injection and clinical use are forbidden.