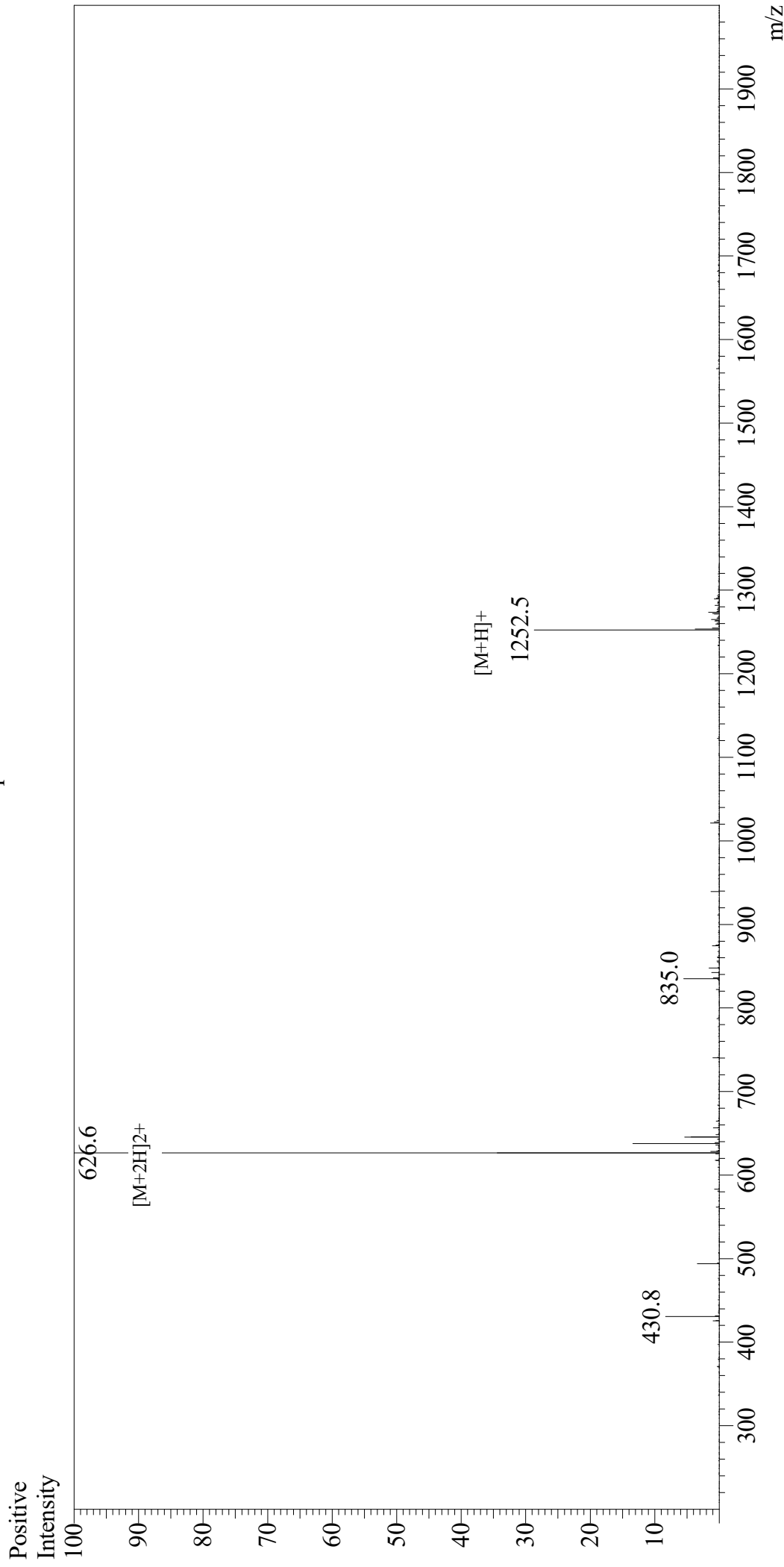


Mass Spectrum



Sample Information

User : Gary
Month-Day Processed : 10/02/19
Time Processed : 06:22:12 PM
Injection Volume : 0.3
Sample Name : p53(17-26)
Cat No. : RP20338
Lot No. : E7069919J
Theoretical MW : 1251.50
Observed MW : 1251.2

Interface : ESI
Nebulizing Gas Flow : 1.5L/min
CDL Temp : 250
Block Temp : 200

Equipment : GK11010007
Interface Bias : +4.5kV
Drying Gas Flow : 5 L/min
T.Flow : 0.2ml/min
B.conc : 50%H2O/50%MeOH