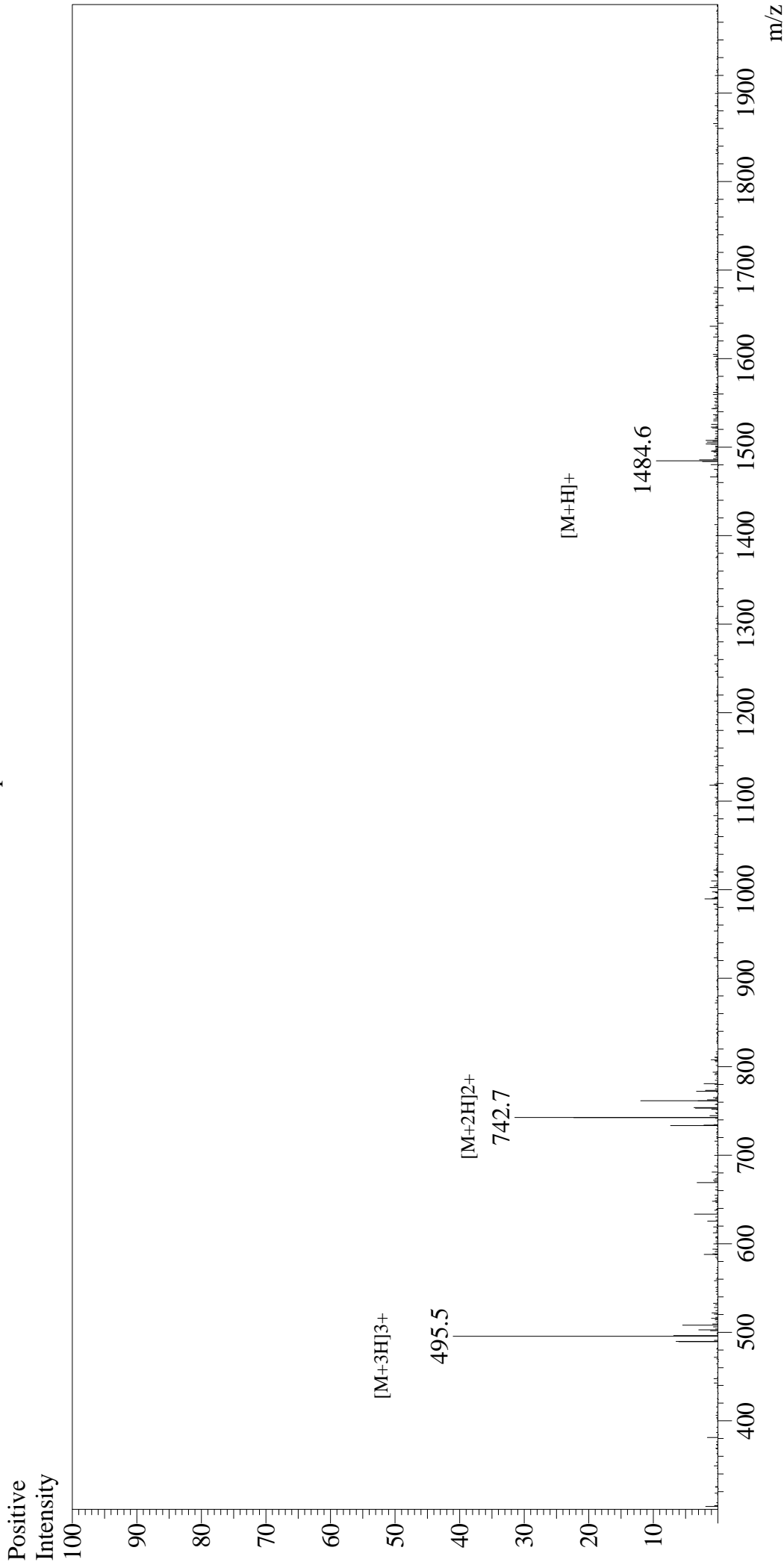


Mass Spectrum



Sample Information

User : Gary
Month-Day Processed : 06/10/20
Time Processed : 23:11:20
Injection Volume : 0.3
Cat No. : RP20102
Lot No. : E1522420F
Theoretical MW : 1483.68
Observed MW : 1483.5

Interface : ESI
Nebulizing Gas Flow : 1.5L/min
CDL Temp : 250
Block Temp : 200

Equipment : GK11010007
Interface Bias : +4.5kV
Drying Gas Flow : 5 L/min
T.Flow : 0.2ml/min
B.conc : 50%H₂O/50%MeOH

β-amyloid (11-22)