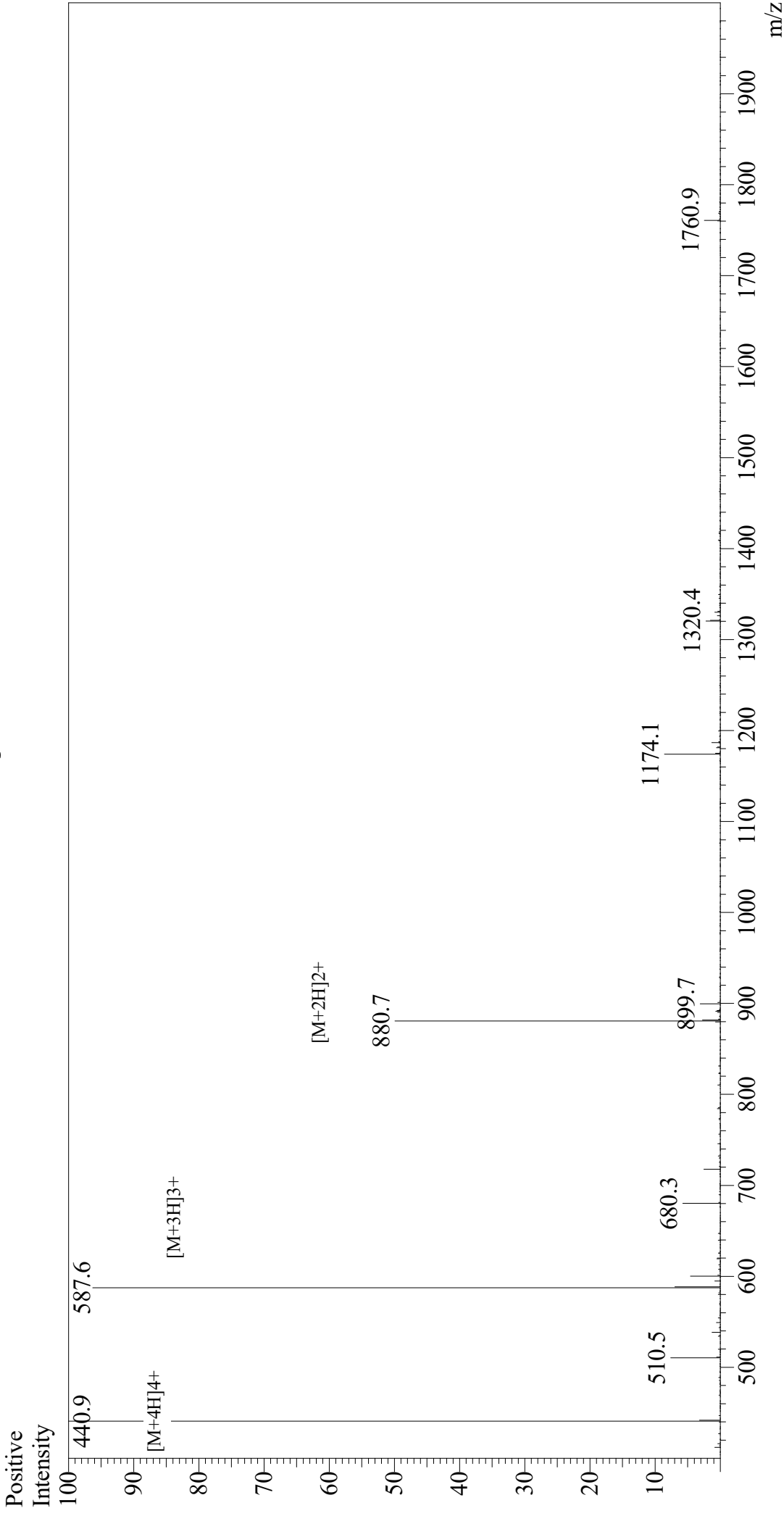


# Mass Spectrum



## Sample Information

Month-Day Processed : 04/18/21  
Time Processed : 6:46:28 PM  
Injection Volume : 0.4  
Sample Name : Angiotensinogen (1-14), human  
Cat. No. : RP10253  
Lot. No. : E2668421D  
Theoretical MW : 1760.10  
Observed MW : 1759.6

## Interface

Interface : ESI  
Nebulizing Gas Flow : 1.5L/min  
CDL Temp : 250  
Block Temp : 200

## Equipment

Equipment : GK11010007  
Interface Bias : +4.5 kV  
Drying Gas Flow : 5 L/min  
T.Flow : 0.2 ml/min  
B.conc : 50% H<sub>2</sub>O/50% MeOH