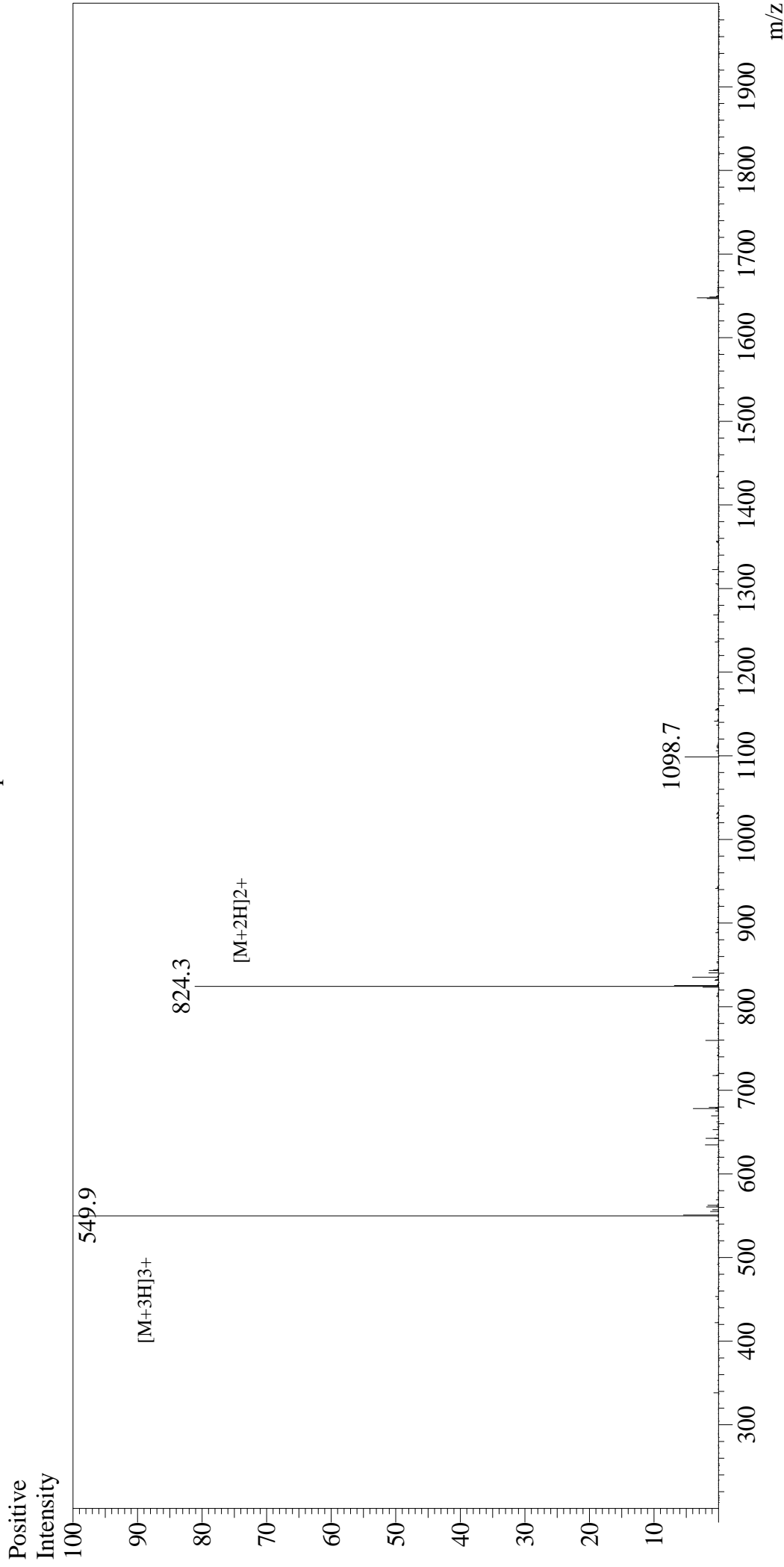


Mass Spectrum



Sample Information	Interface : ESI	Equipment : GK11010007
User : Gary	Nebulizing Gas Flow : 1.5L/min	Interface Bias : +4.5kV
Month-Day Processed : 07/10/20	CDL Temp : 250	Drying Gas Flow : 5 L/min
Time Processed : 19:34:21	Block Temp : 200	T.Flow : 0.2ml/min
Injection Volume : 0.3		B.conc : 50%H2O/50%MeOH
Sample Name : [Nle4, D-Phe7]- α -MSH, amide		
Cat No. : RP10658		
Lot No. : E2302420G		
Theoretical MW : 1647.00		
Observed MW : 1646.7		