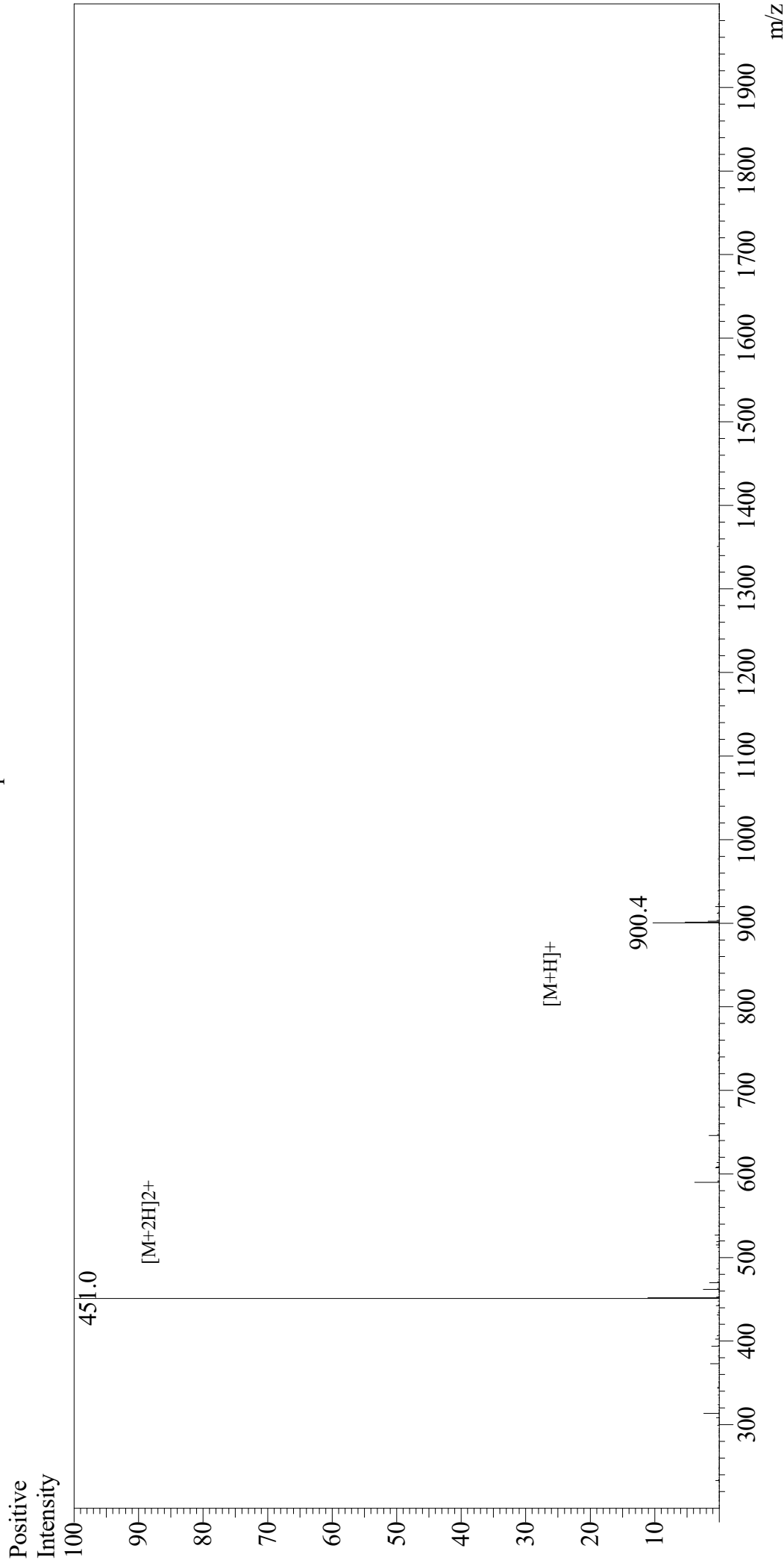


Mass Spectrum



Sample Information

User : Gary
Month-Day Processed : 09/19/19
Time Processed : 09:01:19 PM
Injection Volume : 0.4
Sample Name : Substance P (1-7)
Cat No. : RP10180
Lot No. : E4689519I
Theoretical MW : 900.04
Observed MW : 900.0

Interface : ESI
Nebulizing Gas Flow : 1.5L/min
CDL Temp : 250
Block Temp : 200

Equipment : GK11010007
Interface Bias : +4.5kV
Drying Gas Flow : 5 L/min
T.Flow : 0.2ml/min
B.conc : 50%H2O/50%MeOH