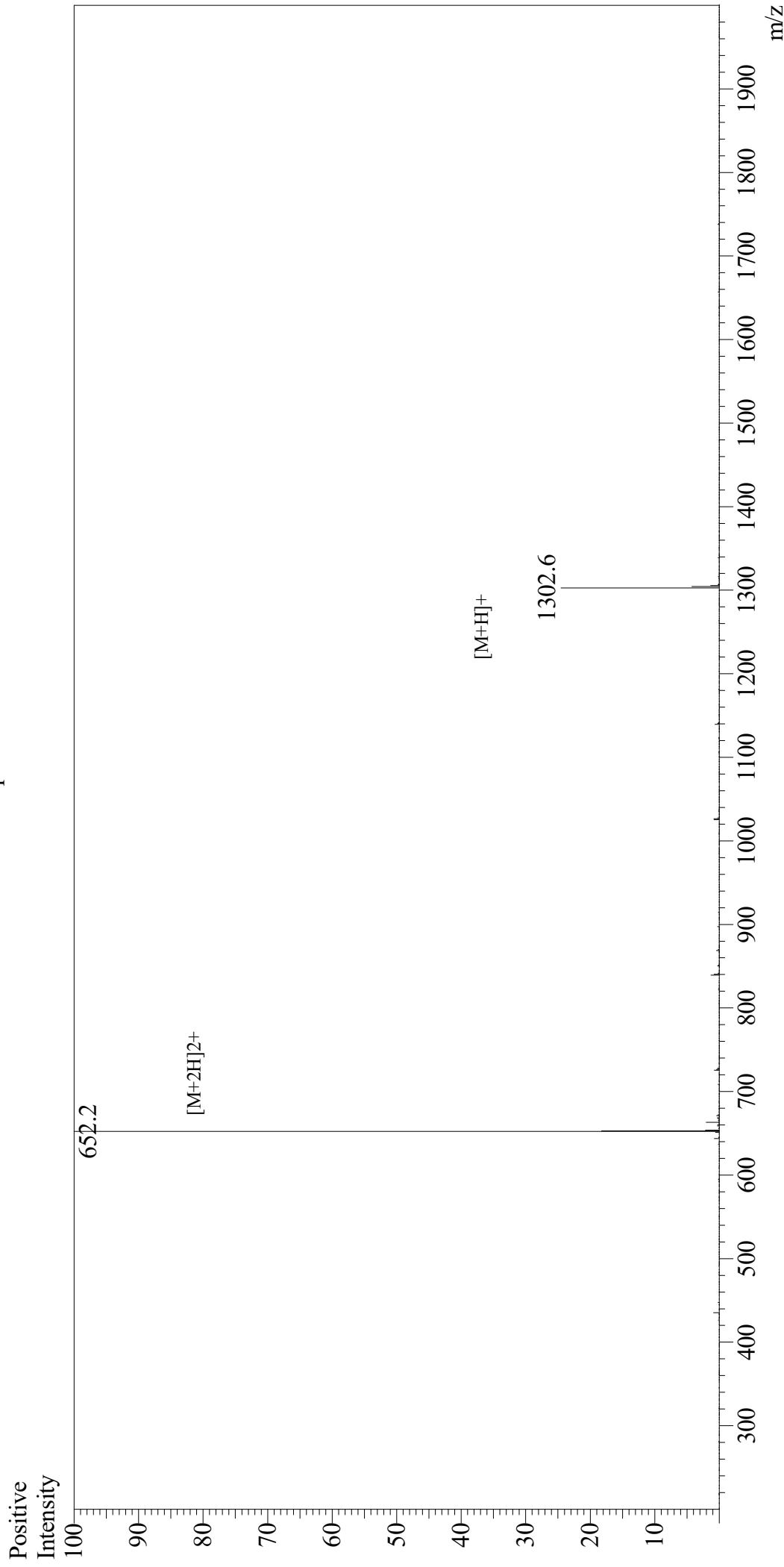


Mass Spectrum



Sample Information

User : Gary
Month-Day Processed : 03/27/20
Time Processed : 10:39:52 AM
Injection Volume : 0.3
Sample Name : Kisspeptin-10
Cat No. : RP20494
Lot No. : E5841320C
Theoretical MW : 1302.50
Observed MW : 1302.4

Interface : ESI
Nebulizing Gas Flow : 1.5L/min
CDL Temp : 250
Block Temp : 200

Equipment : GK11010007
Interface Bias : +4.5kV
Drying Gas Flow : 5 L/min
T.Flow : 0.2ml/min
B.conc : 50%H2O/50%MeOH