

Sample Name : β -Amyloid (1-40), rat
Cat No. : RP10016
Lot No. : E5697219F
Time Processed : 9:23:35
Month-Day-Year Processed : 11/26/2019

Pump A : 0.065% trifluoroacetic in 100% water (v/v)
Pump B : 0.05% trifluoroacetic in 100% acetonitrile (v/v)
Total Flow: 1 ml/min
Wavelength: 220 nm

| Time | Unit | Command | Value | Comment |
|-------|------------|--------------|-------|---------|
| 0.01 | Pumps | Pump B Conc. | 15 | |
| 25.00 | Pumps | Pump B Conc. | 75 | |
| 25.01 | Pumps | Pump B Conc. | 95 | |
| 31.00 | Pumps | Pump B Conc. | 95 | |
| 31.01 | Pumps | Pump B Conc. | 15 | |
| 37.00 | Pumps | Pump B Conc. | 15 | |
| 37.00 | Controller | Stop | | |

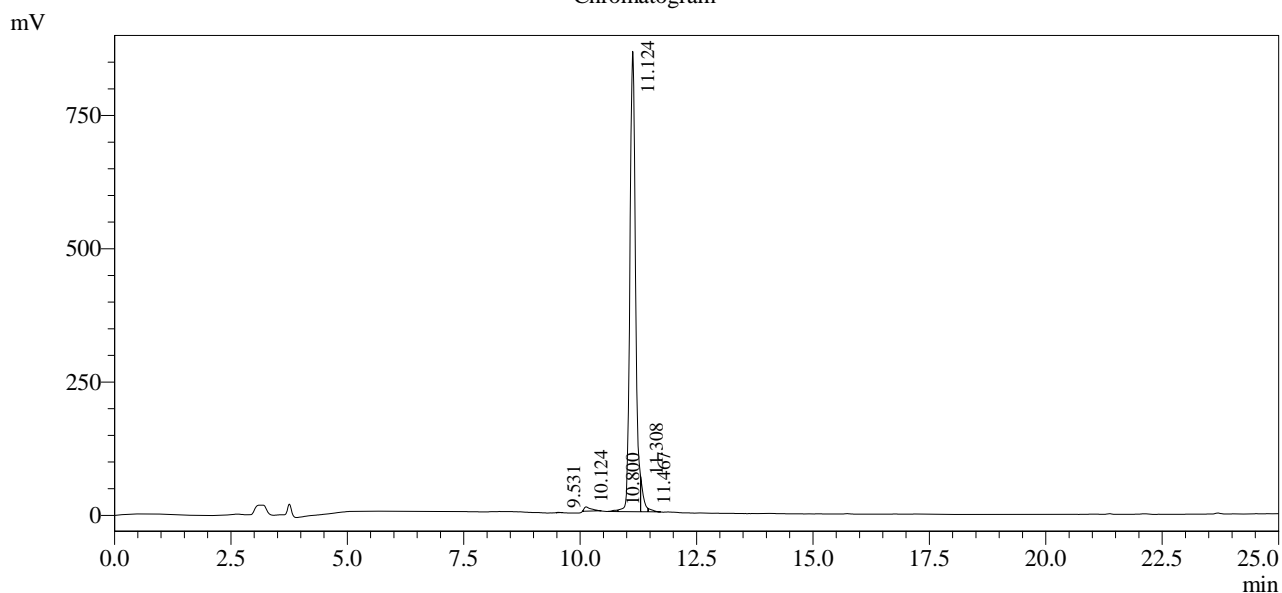
<<Column Performance>>

<Detector A>

Column : AlltimaTM C18 4.6 x 250 mm

Equipment: GR09010180

Chromatogram



1 Det.A Ch1 / 220nm

Peak Table

Detector A Ch1 220nm

| Peak# | Ret. Time | Area | Height | Area % |
|-------|-----------|---------|--------|---------|
| 1 | 9.531 | 2311 | 577 | 0.030 |
| 2 | 10.124 | 83267 | 7958 | 1.091 |
| 3 | 10.800 | 18647 | 2636 | 0.244 |
| 4 | 11.124 | 7257361 | 863597 | 95.129 |
| 5 | 11.308 | 231147 | 59688 | 3.030 |
| 6 | 11.467 | 36217 | 6036 | 0.475 |
| Total | | 7628950 | 940493 | 100.000 |