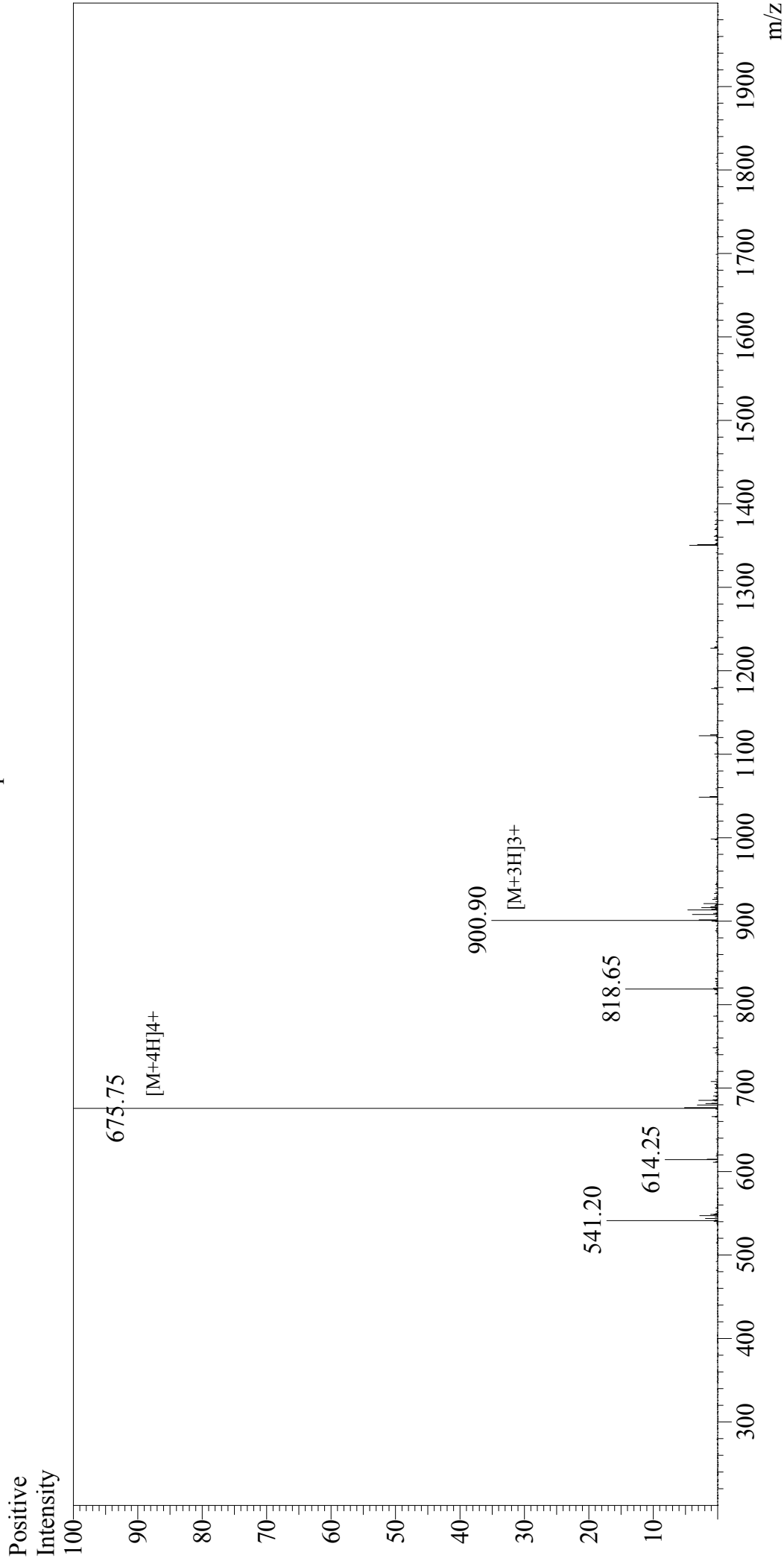


Mass Spectrum



Sample Information

User : Gary
Month-Day Processed : 11/01/17
Time Processed : 22:53:53
Injection Volume : 0.2
Sample Name : Motilin, human, porcine
Cat No. : RP10527
Lot No. : PE6801710
Theoretical MW : 2699.05
Observed MW : 2699.00

Interface

Interface : ESI
Nebulizing Gas Flow : 1.5L/min
CDL Temp : 250°C
Block Temp : 200°C

Interface Bias

Interface Bias : +4.5kV
Drying Gas Flow : 5 L/min
T.Flow : 0.2ml/min
B.conc : 50%H2O/50%MeOH