

Sample Information

Sample Name : Calcitonin Gene Related Peptide (CGRP) (8-37), human
Cat. No : RP11089
Lot. No. : PE9841806

Pump A : 0.065% trifluoroacetic in 100% waters (v/v)
Pump B : 0.05% trifluoroacetic in 100% acetonitrile (v/v)

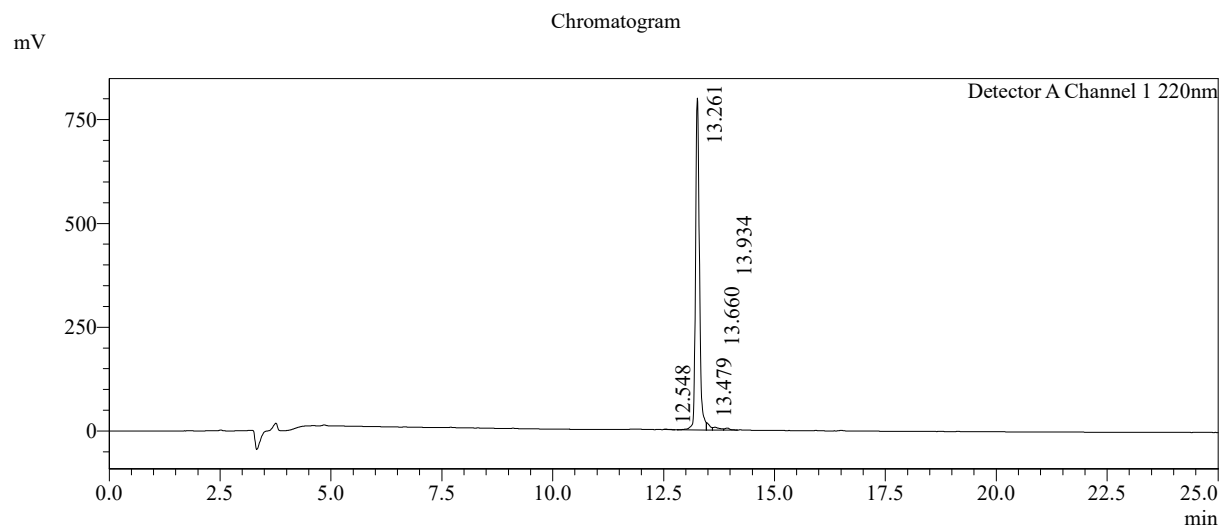
<<Pump>>
Flow : 1.0000 mL/min

<<Detector A>>
Wavelength Ch1 : 220 nm

<<LC Time Program>>

Time	Module	Command	Value	Comment
0.01	Pumps	Solvent B Conc.	5	
25.00	Pumps	Solvent B Conc.	65	
25.01	Pumps	Solvent B Conc.	95	
27.00	Pumps	Solvent B Conc.	95	
27.01	Pumps	Solvent B Conc.	5	
35.00	Pumps	Solvent B Conc.	5	
35.01	Controller	Stop		

<<Column Performance>>
<Detector A>
Column : Inertsil ODS-3 4.6 x 250 mm



Peak Table

Detector A Channel 1 220nm

Peak#	Ret. Time	Height	Area	Height%	Area%
1	12.548	1170	6253	0.141	0.124
2	13.261	798779	4864894	96.400	96.159
3	13.479	17097	84577	2.063	1.672
4	13.660	6715	67458	0.810	1.333
5	13.934	4847	36024	0.585	0.712
Total		828608	5059206	100.000	100.000