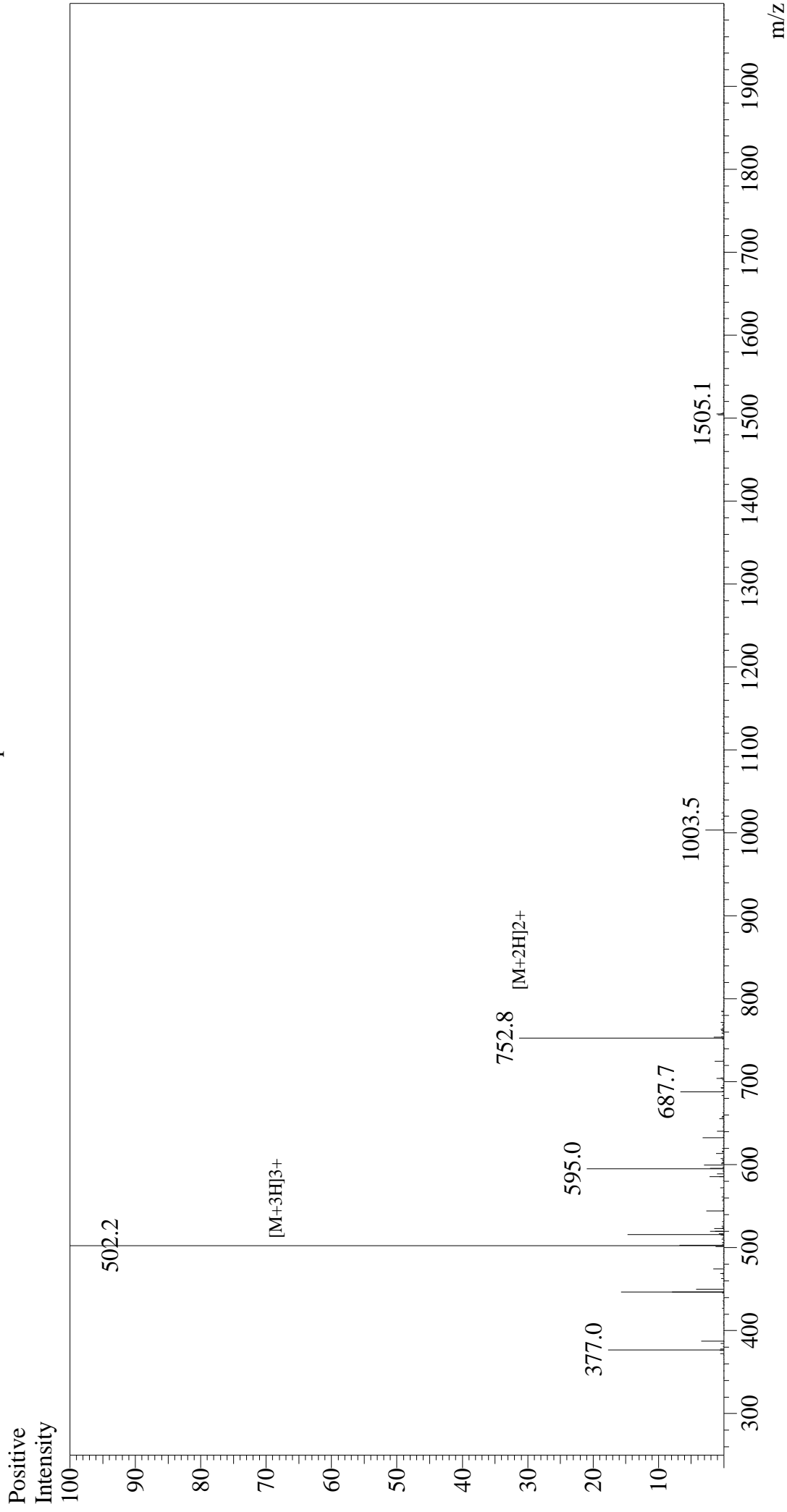


Mass Spectrum



Sample Information

Acquired by : Gary
Month-Day Processed : 10/24/18
Time Processed : 17:36:44
Injection Volume : 0.2
Sample Name : Influenza Hemagglutinin (307-319)
Cat. No. : RP20087
Lot. No. : PE4541810
Theoretical MW : 1503.79
Observed MW : 1503.6

Interface : ESI
Nebulizing Gas Flow : 1.5L/min
CDL Temp : 250°C
Block Temp : 200°C

Equipment : GK11010007
Interface Bias : +4.5 kV
Drying Gas Flow : 5 L/min
T.Flow : 0.2 ml/min
B.conc : 50% H₂O/50% MeOH