

Sample Name :HA Peptide
 Cat. No. : RP11735
 Lot. No. : E4666419I
 Time Processed :9:05:14
 Month-Day-Year Processed :09/19/2019

Pump A : 0.065% trifluoroacetic in 100% water (v/v)
 Pump B : 0.05% trifluoroacetic in 100% acetonitrile (v/v)
 Total Flow:1 ml/min
 Wavelength:220 nm

| Time | Unit | Command | Value | Comment |
|-------|------------|--------------|-------|---------|
| 0.01 | Pumps | Pump B Conc. | 5 | |
| 25.00 | Pumps | Pump B Conc. | 65 | |
| 25.01 | Pumps | Pump B Conc. | 95 | |
| 27.00 | Pumps | Pump B Conc. | 95 | |
| 27.01 | Pumps | Pump B Conc. | 5 | |
| 35.00 | Pumps | Pump B Conc. | 5 | |
| 35.01 | Controller | Stop | | |

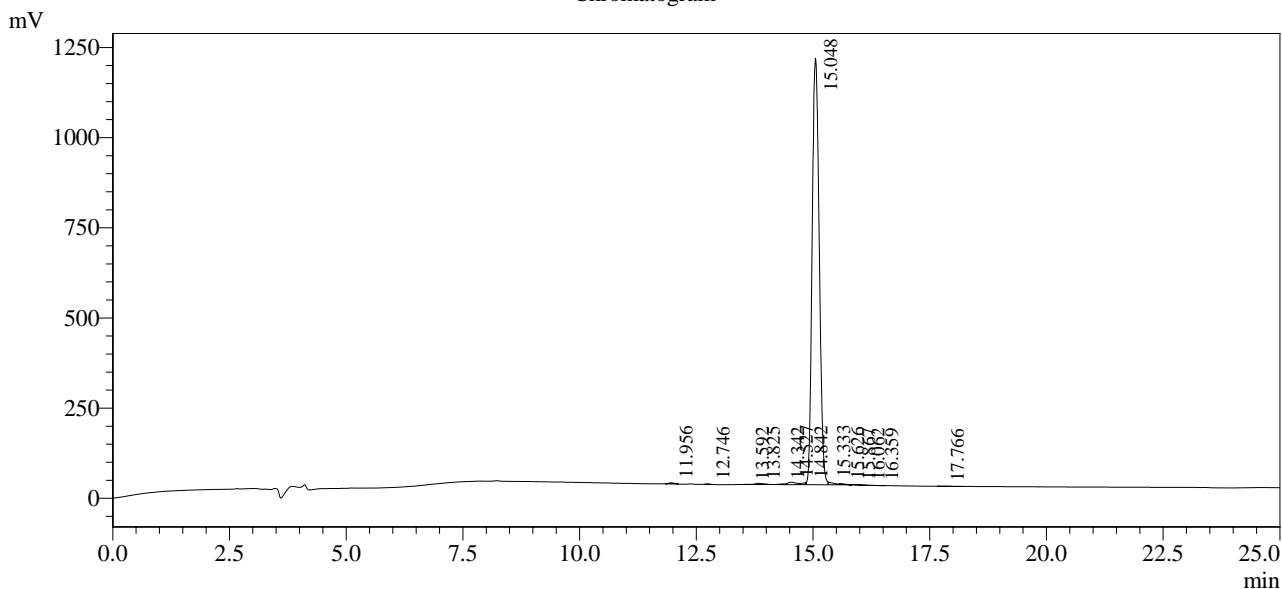
<<Column Performance>>

<Detector A>

Column : Inertsil ODS-3 4.6 x 250 mm

Equipment :SS-CM-0310

Chromatogram



1 Det.A Ch1 / 220nm

Peak Table

Detector A Ch1 220nm

| Peak# | Ret. Time | Area | Height | Area % |
|-------|-----------|----------|---------|---------|
| 1 | 11.956 | 22508 | 2940 | 0.176 |
| 2 | 12.746 | 7802 | 1532 | 0.061 |
| 3 | 13.592 | 3689 | 486 | 0.029 |
| 4 | 13.825 | 45507 | 3277 | 0.356 |
| 5 | 14.342 | 15935 | 1871 | 0.125 |
| 6 | 14.527 | 90321 | 6789 | 0.706 |
| 7 | 14.842 | 34843 | 5533 | 0.272 |
| 8 | 15.048 | 12475381 | 1182565 | 97.504 |
| 9 | 15.333 | 71765 | 7249 | 0.561 |
| 10 | 15.626 | 7106 | 936 | 0.056 |
| 11 | 15.867 | 2788 | 604 | 0.022 |
| 12 | 16.062 | 7024 | 1043 | 0.055 |
| 13 | 16.359 | 5540 | 719 | 0.043 |
| 14 | 17.766 | 4476 | 448 | 0.035 |
| Total | | 12794685 | 1215992 | 100.000 |