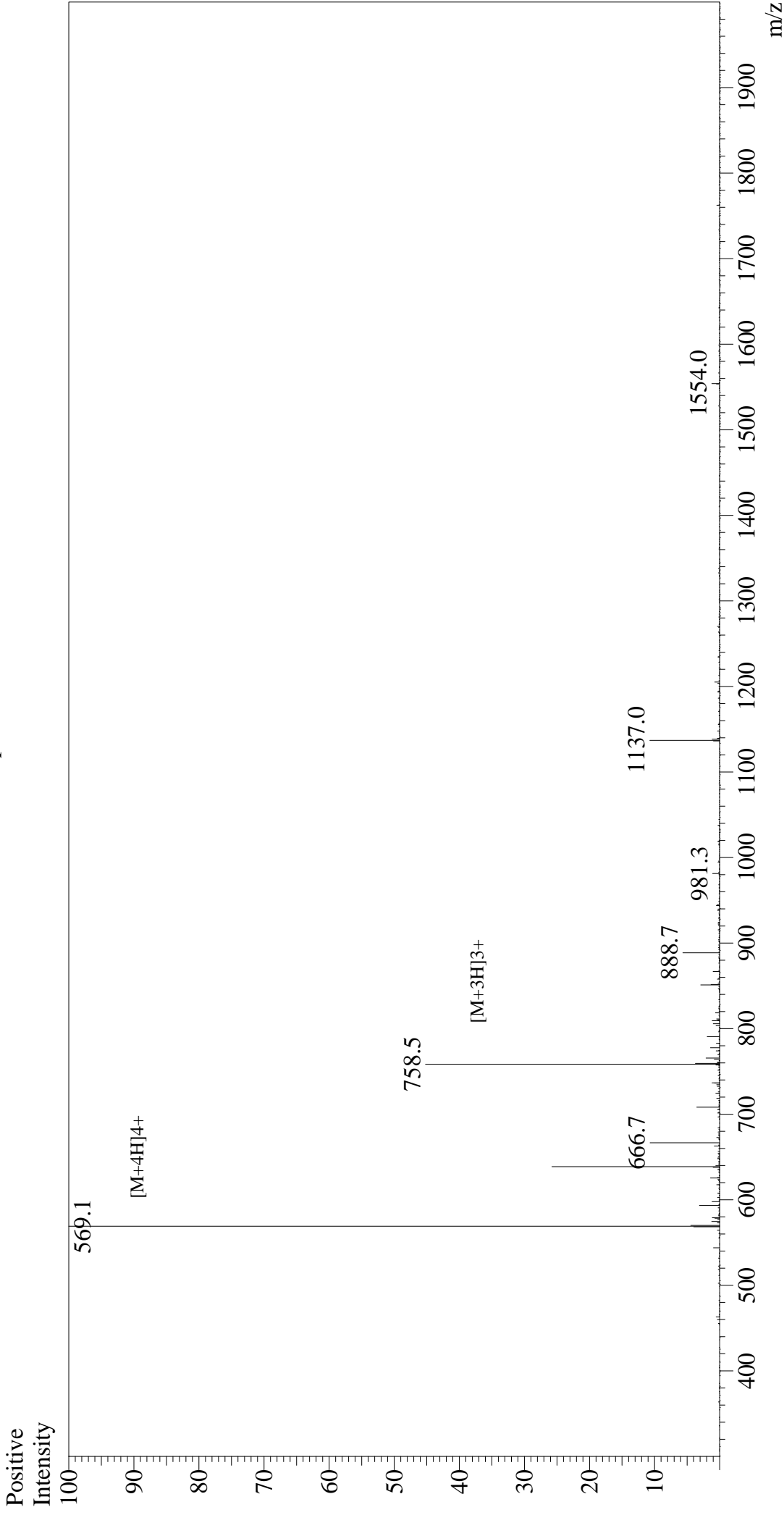


Mass Spectrum



Sample Information

Acquired by :	Gary	Equipment	: GK11010007
Month-Day Processed :	09/23/19	Interface Bias	: +4.5 kV
Time Processed :	22:09:20	Drying Gas Flow	: 5 L/min
Injection Volume :	0.3	T.Flow	: 0.2 ml/min
Sample Name :	Prolactin Releasing Peptide (12-31), human	B.conc	: 50% H ₂ O/50% MeOH
Cat. No. :	RP11864	Interface	: ESI
Lot. No. :	E48779191	Nebulizing Gas Flow	: 1.5L/min
Theoretical MW :	2272.60	CDL Temp	: 250
Observed MW :	2272.4	Block Temp	: 200