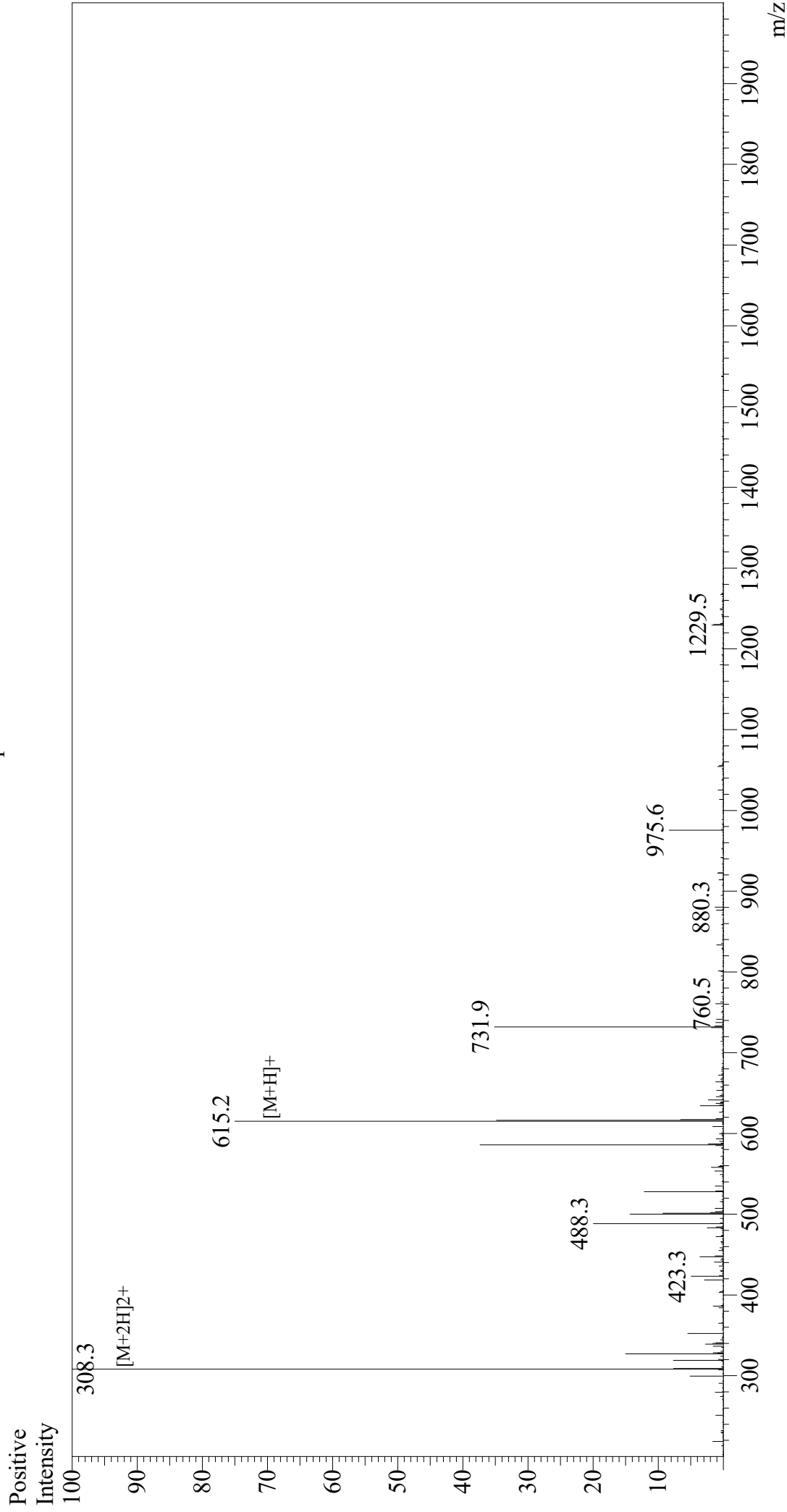


Mass Spectrum



Sample Information
Month-Day Processed : 10/30/20
Time Processed : 11:13:28 AM
Injection Volume : 0.3
Sample Name : Gly-Arg-Gly-Asp-Asn-Pro
Cat No : RP10847
Lot No : E1278720J
Theoretical MW : 614.60
Observed MW : 614.6

Interface : ESI
Nebulizing Gas Flow : 1.5L/min
CDL Temp : 250
Block Temp : 200
Equipment : GK11010007
Interface Bias : +4.5 kV
Drying Gas Flow : 5 L/min
T.Flow : 0.2 ml/min
B.conc : 50% H₂O/50% MeOH